



A well presented and spacious two bedroom apartment in a convenient location
Eastbury Avenue, Northwood, HA6 3FJ

ROBSONS

Asking Price: £2,350 pcm

A well presented and spacious two bedroom apartment in a convenient location

Eastbury Avenue, Northwood, HA6 3FJ

-
- FIRST FLOOR APARTMENT • ENTRANCE HALL • FITTED KITCHEN • LOUNGE • TWO BEDROOMS • TWO BATHROOMS • TWO ALLOCATED PARKING SPACES • COMMUNAL GARDEN • UNFURNISHED
-

Description

An extremely well presented and spacious two bedroom apartment located on the prestigious Eastbury Avenue in Northwood. The first floor property comprises, entrance hallway, master bedroom with ensuite bathroom and fitted wardrobes, second bedroom with ensuite bathroom and fitted wardrobes, modern kitchen with appliances, large living room with Juliet balcony, guest W/C and a hallway storage cupboard. The property benefits from secure gated parking with two allocated parking spaces, communal gardens and telephone entry system. The property is offered unfurnished and is available immediately.

** An advance reservation payment of one weeks rent is required to secure this property**

Location


Northwood provides a range of shopping facilities, a Waitrose supermarket, restaurants and the Metropolitan Line Station providing access to Baker Street and the city beyond. The area has a range of both private and state schools. Places of worship and recreational facilities are also well catered for in the surrounding area and major motorway links to M25 and M1 are nearby.





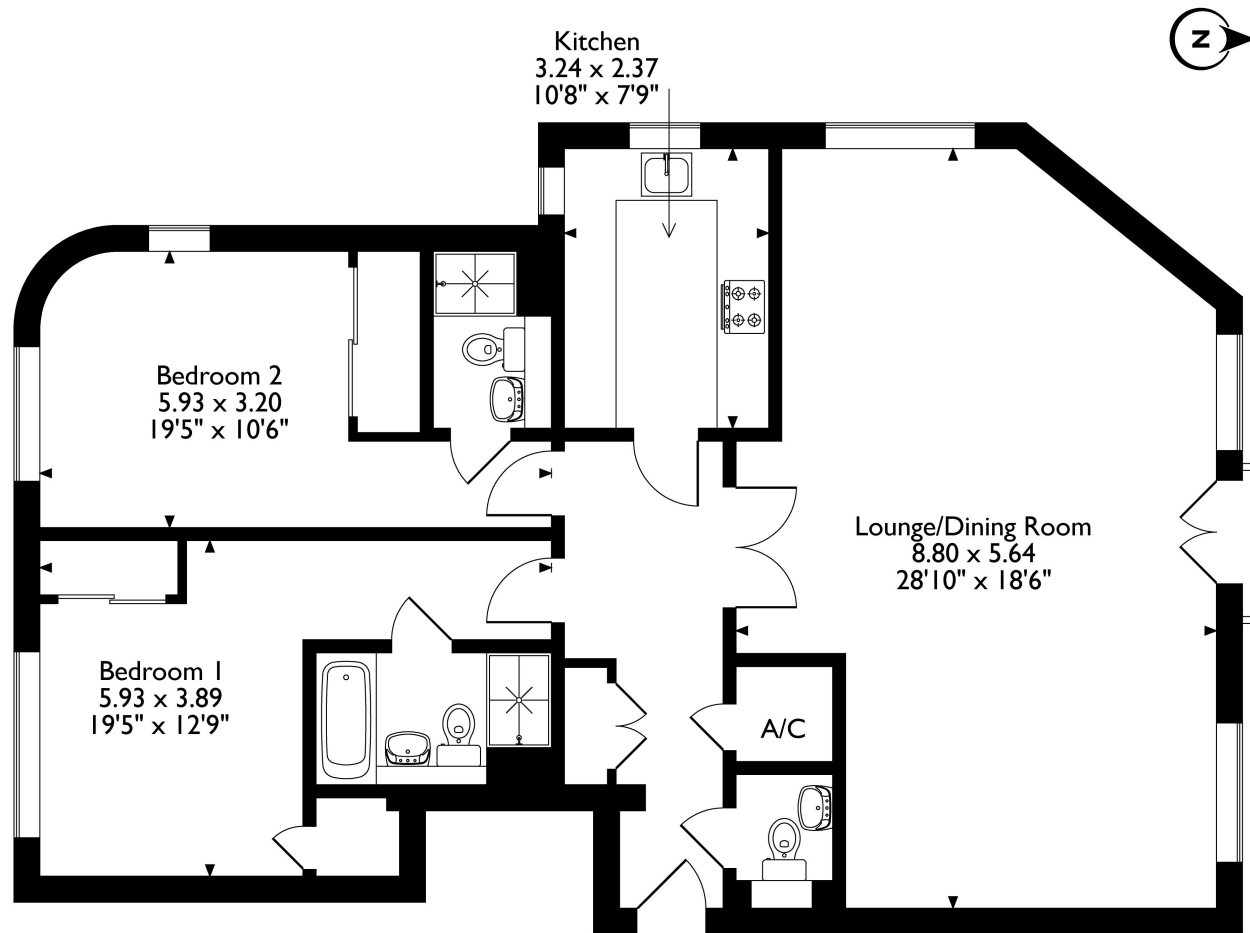
Additional Information

- Local Authority:
- Council Tax Band: F
- Deposit Amount: £2,710.00
- Reservation Payment: One weeks rent
- Energy Efficiency Rating: Band B
- Available Date: 12/09/2024

Energy Efficiency Rating		
	Current	Potential
Very energy efficient - lower running costs		
92-100 A		
81-91 B	84	84
69-80 C		
55-68 D		
39-54 E		
21-38 F		
1-20 G		
Not energy efficient - higher running costs		
England & Wales		EU Directive 2002/91/EC 



Emberton Court, Eastbury Avenue, Northwood, Middlesex, HA6 3FJ
Approximate Gross Internal Area
105 Sq M / 1130 Sq Ft



First Floor

Please note that the location of doors, windows and other items are approximate and this floorplan is to be used for illustrative purposes only. Unauthorized reproduction is prohibited.



REGISTERED OFFICE 2-4 PACKHORSE ROAD, GERRARDS CROSS, BUCKINGHAMSHIRE, ENGLAND, SL9 7QE. COMPANY NO. 07557114. VAT NO. GB211239453