



A two double bedroom terraced property with off street parking in a cul de sac
Derwent Close, Watford, WD25 0NQ

ROBSONS

Asking Price: £1,650 pcm

A two double bedroom terraced property with off street parking in a cul de sac

Derwent Close, Watford, WD25 0NQ

• TERRACE HOUSE • ENTRANCE HALL • GUEST W/C • LIVING ROOM • KITCHEN • TWO DOUBLE BEDROOMS • FAMILY BATHROOM • PRIVATE REAR GARDEN • ALLOCTED PARKING • UNFURNISHED

Description

A well presented two bedroom family home situated in a popular residential location in Watford. The property comprises, entrance hall, living room, kitchen, guest W/C , two double bedrooms and a family bathroom. The property also features off street parking and a private rear garden.

We hereby disclose that a Personal Interest exists which constitutes a Declarable Interest under the Estate Agents Act 1979.

** An advance reservation payment of one weeks rent is required to secure the property **

Location

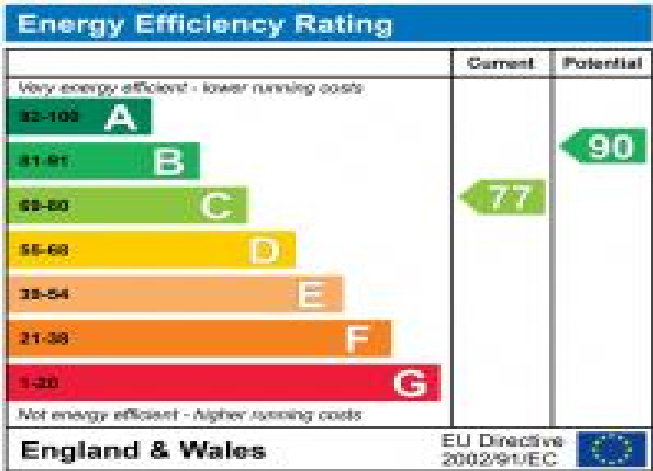
Situated in a quiet cul de sac location close to excellent facilities including the M1 and M25, with major road links to London and the North. Watford Junction Station and Watford's town centre are within three miles.





Additional Information

- Local Authority: Watford
- Council Tax Band: D
- Deposit Amount: £1,840.00
- Reservation Payment: One weeks rent
- Energy Efficiency Rating: Band C
- Available Date: 27/08/2024



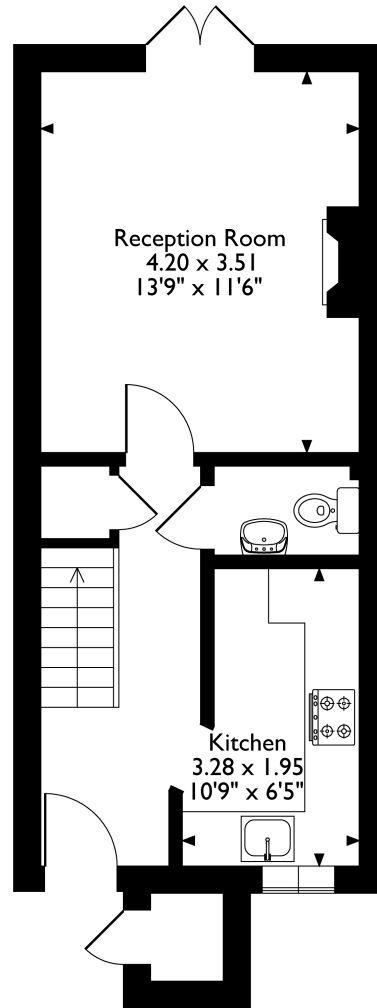
Derwent Close, Watford, Hertfordshire, WD25 0NQ

Approximate Gross Internal Area

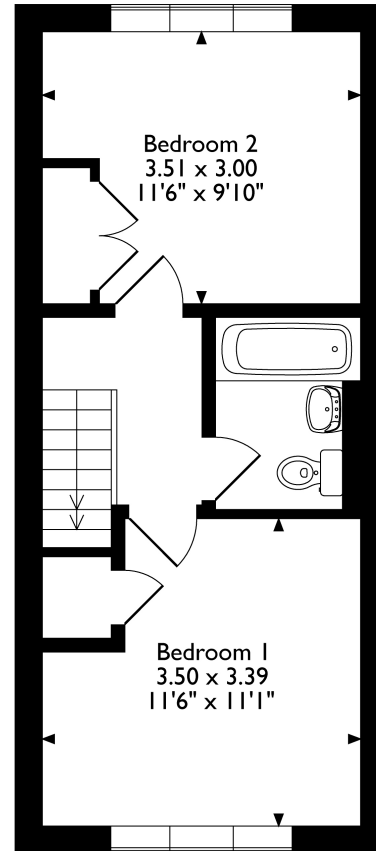
Main House = 62 Sq M/668 Sq Ft

Outbuilding = 1 Sq M/11 Sq Ft

Total = 63 Sq M/679 Sq Ft



Ground Floor



First Floor

Please note that the location of doors, windows and other items are approximate and this floorplan is to be used for illustrative purposes only. Unauthorized reproduction is prohibited.



REGISTERED OFFICE 2-4 PACKHORSE ROAD, GERRARDS CROSS, BUCKINGHAMSHIRE, ENGLAND, SL9 7QE. COMPANY NO. 07557114. VAT NO. GB211239453