



A well presented two bedroom apartment
Lingfield Close, Northwood, Middlesex HA6 2FP

ROBSONS

Asking Price: £1,595 pcm

A well presented two bedroom apartment

Lingfield Close, Northwood, Middlesex HA6 2FP

• RECEPTION ROOM • KITCHEN • TWO BEDROOMS • BATHROOM • COMMUNAL GROUNDS • OFF STREET PARKING • GARAGE IN A BLOCK • EXTERNAL STORAGE ROOM • UNFURNISHED

Description

A well presented two bedroom apartment situated within moments of Northwood town centre. Set in attractive communal grounds the property also benefits from off street resident parking and a garage in a nearby block and additional external storage room.

**** An advance reservation payment of one weeks rent is required to secure the property ****

Location

Northwood provides a range of shopping facilities, a Waitrose supermarket, restaurants and the Metropolitan Line Station providing access to Baker Street and the city beyond. The area has a range of both private and state schools. Places of worship and recreational facilities are also well catered for in the surrounding area and major motorway links to M25 and M1 are nearby.





Additional Information

- Local Authority: London Borough of Hillingdon
- Council Tax Band: D
- Deposit Amount: £1,840.00
- Reservation Payment: One weeks rent
- Energy Efficiency Rating: Band C
- Available Date: 13/09/2024

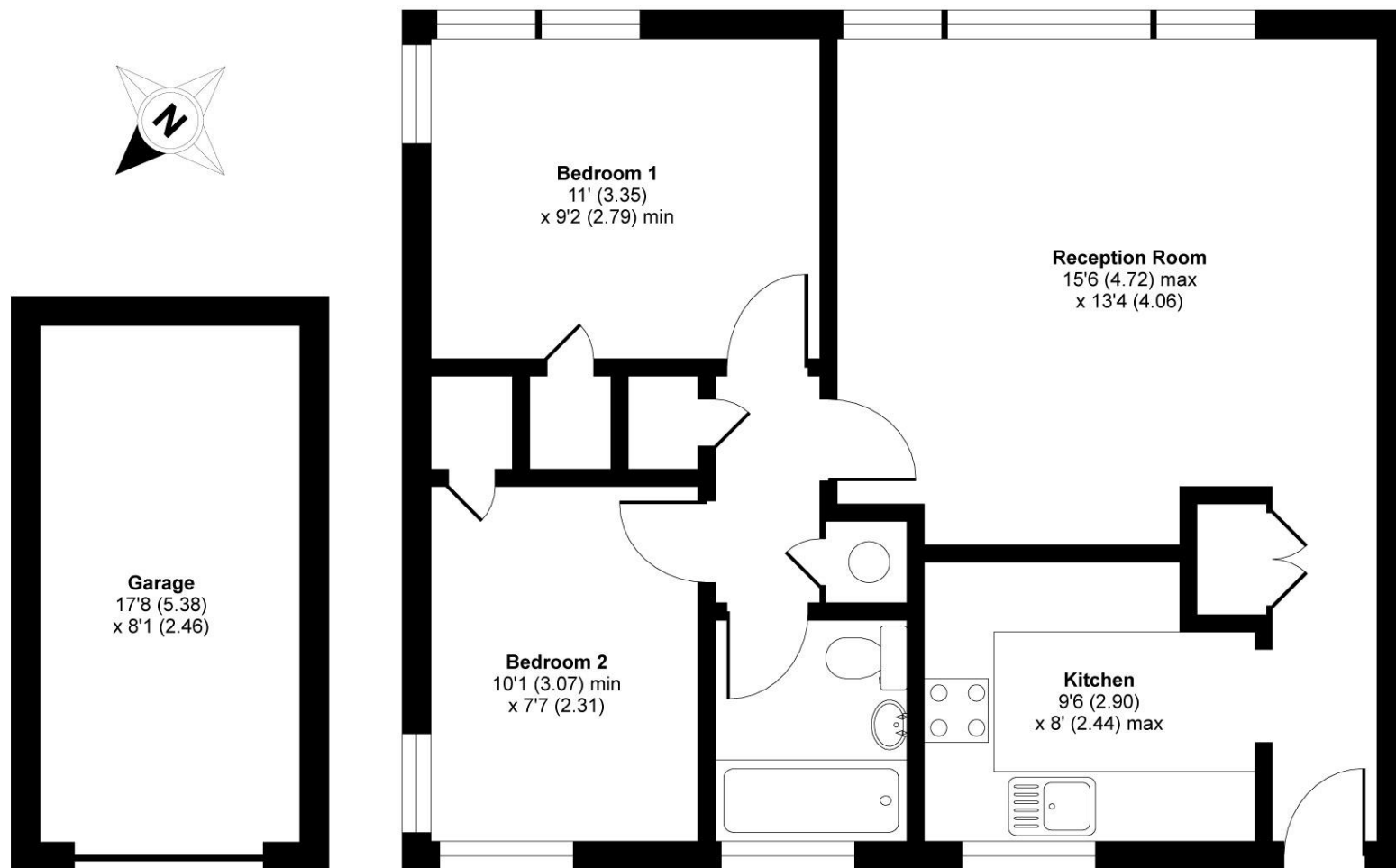
Energy Efficiency Rating			Environmental Impact (CO ₂) Rating		
	Current	Potential		Current	Potential
Very energy efficient - lower running costs			Very environmentally friendly - lower CO ₂ emissions		
(92-100) A			(92-100) A		
(81-91) B		83	(81-91) B		
(69-80) C	70		(69-80) C		72
(55-68) D			(55-68) D	60	
(39-54) E			(39-54) E		
(21-38) F			(21-38) F		
(1-20) G			(1-20) G		
Not energy efficient - higher running costs			Not environmentally friendly - higher CO ₂ emissions		
England, Scotland & Wales	EU Directive 2002/91/EC		England, Scotland & Wales	EU Directive 2002/91/EC	

The energy efficiency rating is a measure of the overall efficiency of a home. The higher the rating the more energy efficient the home is and the lower the fuel bills will be.

The environmental impact rating is a measure of a home's impact on the environment in terms of carbon dioxide (CO₂) emissions. The higher the rating the less impact it has on the environment.



APPROX. GROSS INTERNAL FLOOR AREA 624 SQ FT 57.9 SQ METRES (EXCLUDES GARAGE)



FIRST FLOOR

'For illustrative purposes only - not to scale. The position and size of doors, windows, appliances and other features are approximate only.'

Whilst every attempt has been made to ensure the accuracy of the floor plan contained here, measurements of doors, windows and rooms are approximate and no responsibility is taken for any error, omission or misstatement. These plans are for representation purposes only as defined by RICS Code of Measuring Practice and should be used as such by any prospective purchaser. Specifically no guarantee is given on the total square footage of the property if quoted on this plan. Any figure given is for initial guidance only and should not be relied on as a basis of valuation.

Copyright nichecom.co.uk 2019 Produced for Robsons REF : 421056



REGISTERED OFFICE 2-4 PACKHORSE ROAD, GERRARDS CROSS, BUCKINGHAMSHIRE, ENGLAND, SL9 7QE. COMPANY NO. 07557114. VAT NO. GB211239453