



A four bedroom family home in a highly sought after location  
Grove Farm Park, Northwood, Middlesex HA6 2BQ

**ROBSONS**

**Asking Price: £3,750 pcm**

## **A four bedroom family home in a highly sought after location**

Grove Farm Park, Northwood, Middlesex HA6 2BQ

---

• LIVING ROOM LEADING TO DINING AREA • KITCHEN/BREAKFAST ROOM & UTILITY ROOM • FAMILY ROOM • CLOAKROOM • MAIN BEDROOM WITH ENSUITE • THREE FURTHER BEDROOMS • BATHROOM • INTEGRAL DOUBLE GARAGE • REAR GARDEN • DRIVEWAY WITH OFF STREET PARKING • UNFURNISHED

---

### **Description**

Situated on the popular Grove Farm Park estate and well located for the amenities of Northwood this newly refurbished four double bedroom detached family home offers bright and spacious living accommodation. Benefits include off street parking, well tended rear and front garden and integral double garage.

\*\* An advance reservation payment of one weeks rent is required to secure the property \*\*

### **Location**

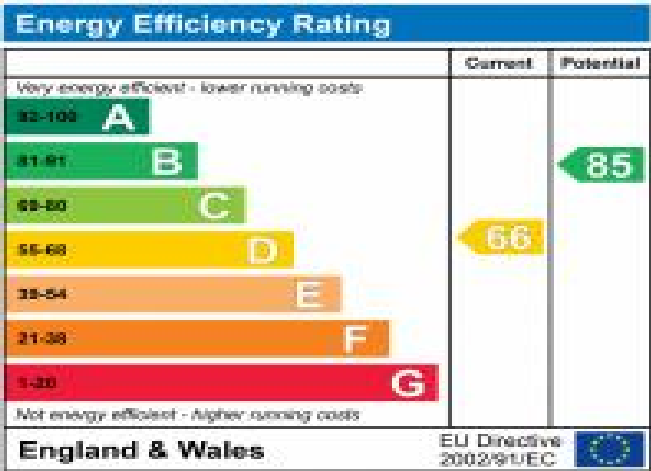
Northwood provides a range of shopping facilities including Waitrose supermarket, a variety of restaurants and other amenities with the Metropolitan Line station. There is a wide choice of recreational facilities, which include golf courses and fitness centres. The M1, M40 and M25 motorways are also accessible.



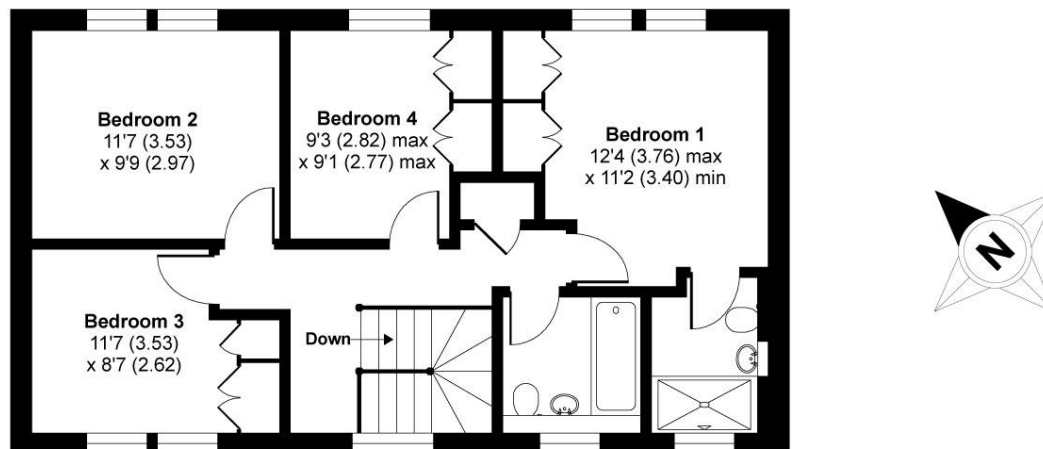


**Additional Information**

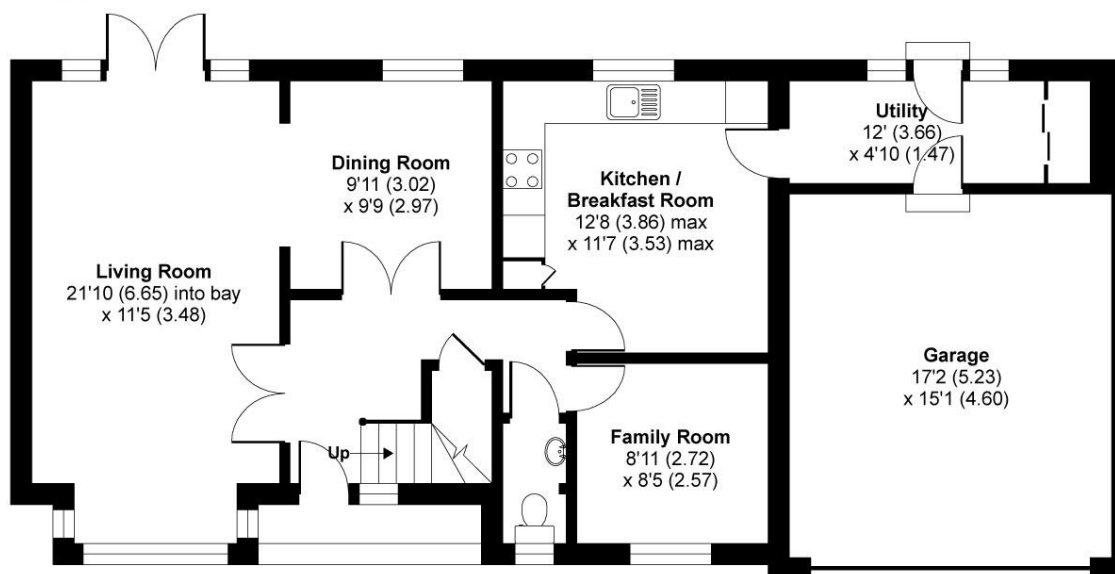
- Local Authority: Three Rivers
- Council Tax Band: G
- Deposit Amount: £4,326.00
- Reservation Payment: One weeks rent
- Energy Efficiency Rating: Band D
- Available Date: 30/09/2024



APPROX. GROSS INTERNAL FLOOR AREA 1727 SQ FT 160.4 SQ METRES (INCLUDES GARAGE)



FIRST FLOOR



GROUND FLOOR

'For illustrative purposes only - not to scale. The position and size of doors, windows, appliances and other features are approximate only.'

Whilst every attempt has been made to ensure the accuracy of the floor plan contained here, measurements of doors, windows and rooms are approximate and no responsibility is taken for any error, omission or misstatement. These plans are for representation purposes only as defined by RICS Code of Measuring Practice and should be used as such by any prospective purchaser. Specifically no guarantee is given on the total square footage of the property if quoted on this plan. Any figure given is for initial guidance only and should not be relied on as a basis of valuation.

Copyright nichecom.co.uk 2016 Produced for Robsons REF : 76863



REGISTERED OFFICE 2-4 PACKHORSE ROAD, GERRARDS CROSS, BUCKINGHAMSHIRE, ENGLAND, SL9 7QE. COMPANY NO. 07557114. VAT NO. GB211239453