



A well-presented one bedroom apartment in a convenient location
Clarkfield, Rickmansworth, WD3 8FH

ROBSONS

Asking Price: £1,250 pcm

A well-presented one bedroom apartment in a convenient location

Clarkfield, Rickmansworth, WD3 8FH

• SECOND FLOOR APARTMENT • MODERN FITTED KITCHEN • RECEPTION ROOM • STORAGE ROOM • BEDROOM • BATHROOM • RESIDENTS PARKING • SECURE ENTRY PHONE SYSTEM • BICYCLE SHED • UNFURNISHED

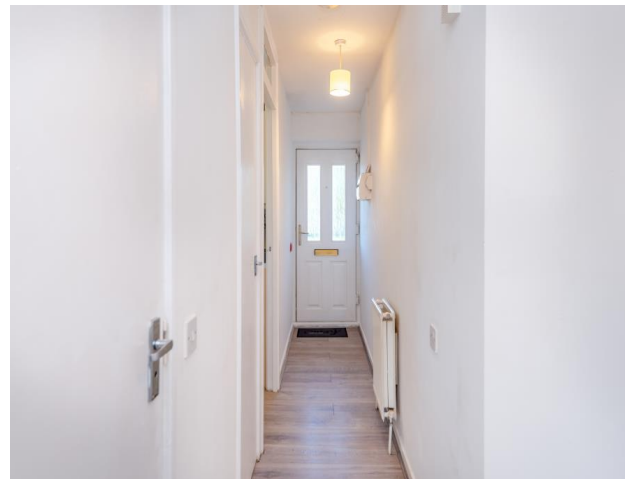
Description

Robsons are pleased to bring to market this well-presented one bedroom apartment situated on a sought after cul-de-sac location in Mill End. The property comprises of a sizeable reception room, a modern fitted kitchen, a double bedroom and a three piece bathroom suite. Benefits include a sizeable storage cupboard, secure phone entry system, residents parking and a bicycle shed.

****An advance reservation payment of one weeks rent is required to secure this property****

Location

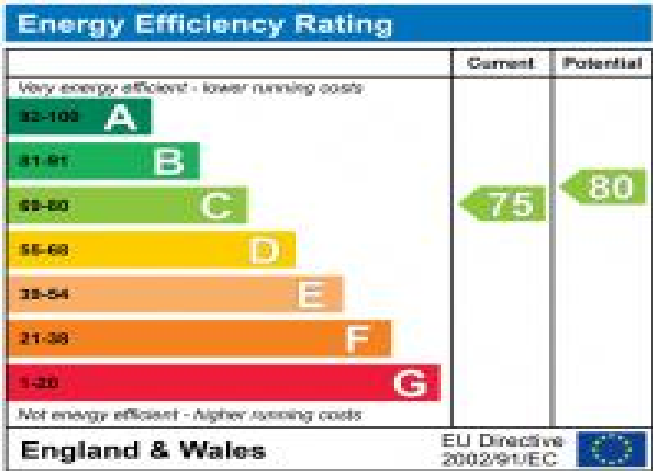
Rickmansworth town centre has a wide range of boutique shops, coffee houses, restaurants and major supermarkets. The Metropolitan and Chiltern line train services connect you to London Baker Street, Marylebone Station and beyond. The M25 motorway is available at both junction 17 and 18 connecting you to the national motorway network. Major London airports are also within reach. The area is well served for good quality private and state schools for all ages. Chorleywood and Rickmansworth offer everything for the sporting individual from cricket, football, tennis, horse riding and golf. Rickmansworth Aquadrome is well catered for walks, sailing, fishing and water skiing sports.



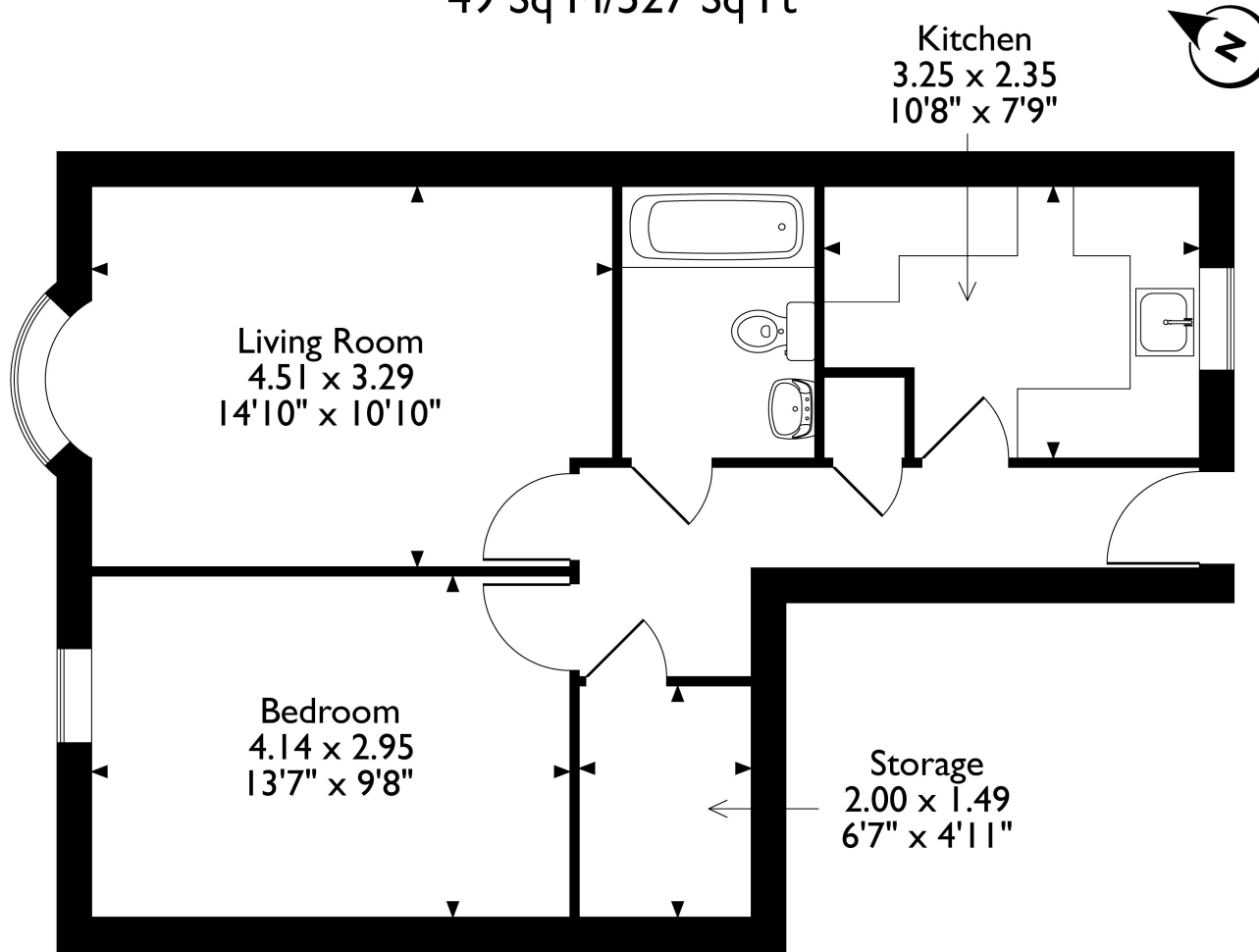


Additional Information

- Local Authority: Three Rivers
- Council Tax Band: C
- Deposit Amount: £1,442.00
- Reservation Payment: One weeks rent
- Energy Efficiency Rating: Band C
- Available Date: 18/07/2024



Mill End, Clarkfield, Rickmansworth, Hertfordshire, WD3 8FH
Approximate Gross Internal Area
49 Sq M/527 Sq Ft



Second Floor Flat

Please note that the location of doors, windows and other items are approximate and this floorplan is to be used for illustrative purposes only. Unauthorized reproduction is prohibited.



REGISTERED OFFICE 2-4 PACKHORSE ROAD, GERRARDS CROSS, BUCKINGHAMSHIRE, ENGLAND, SL9 7QE. COMPANY NO. 07557114. VAT NO. GB211239453