



A two bedroom cottage with private garden and off street parking
Redhall Lane, Rickmansworth, Hertfordshire WD3 4LS

ROBSONS

Asking Price: £2,300 pcm

A two bedroom cottage with private garden and off street parking

Redhall Lane, Rickmansworth, Hertfordshire WD3 4LS

• RECEPTION ROOM • OPEN PLAN KITCHEN/BREAKFAST ROOM • CLOAKROOM • TWO DOUBLE BEDROOMS • BATHROOM • OFF STREET PARKING • PRIVATE MATURE GARDEN • AMPLE OFF STREET PARKING TO THE FRONT • RENT INCLUDES GARDEN MAINTENANCE • UNFURNISHED

Description

"The Stables" is a picturesque barn conversion situated in a rural location, the house is double fronted with an ideal mixture of traditional and modern features, there is a double aspect living room with a tiled floor and a brick fireplace. The kitchen/breakfast room is fitted a range of modern units providing ample storage space and integrated appliances and there is also a guest cloakroom. To the first floor is a feature window overlooking a paddock, two double bedrooms and a large family bathroom. The gardens are to the side of the house with mature hedging boundaries and to the front is ample parking for three cars. A particular feature of this property are the views of the surrounding countryside. Rent includes garden maintenance. ** An advance reservation payment of one weeks rent is required to secure the property **

Location

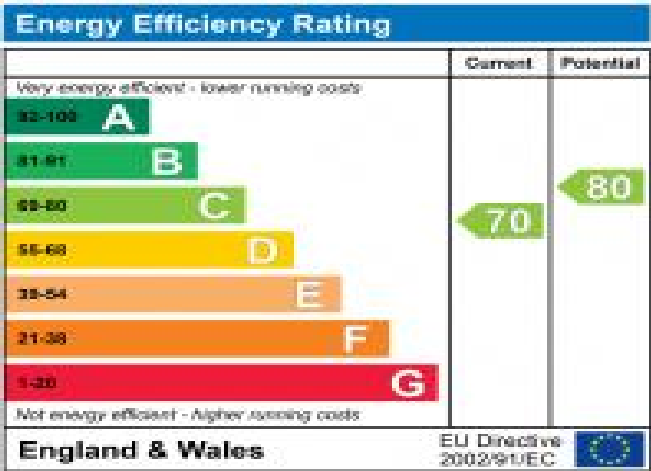
Chandler's Cross is a designated Area of outstanding Natural Beauty. Amongst the beautiful surrounding villages of Belsize, Chipperfield, Chandler's Cross and Sarratt there are 4 pubs, a village shop, 2 village schools and a post office. It is also close to Chorleywood, Rickmansworth, Little Chalfont, Berkhamsted and the market town of Amersham, all of which contain a broad selection of shops, boutiques, restaurants and supermarkets. The larger centre of Watford is nearby and Central London is only about 24 miles away. The M25 is within easy access at junctions 18 and 19.



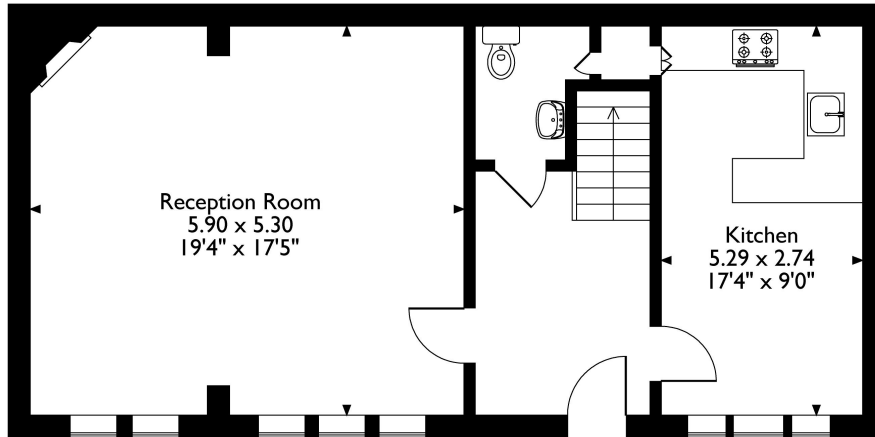


Additional Information

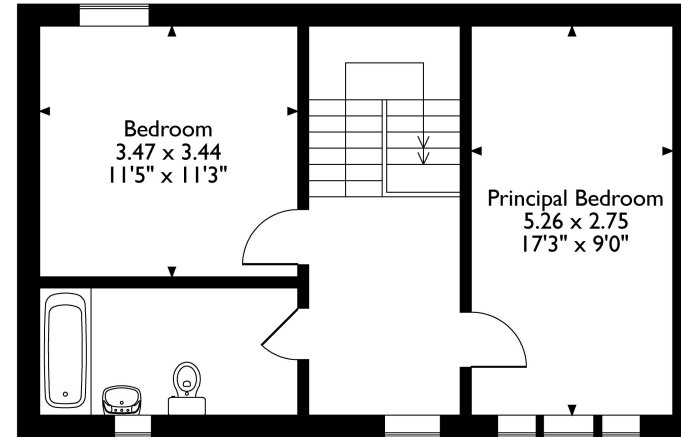
- Local Authority: Three Rivers
- Council Tax Band: F
- Deposit Amount: £2,653.00
- Reservation Payment: One weeks rent
- Energy Efficiency Rating: Band C
- Available Date: 25/06/2024



The Stables, Redhall Lane Chandlers Cross, Rickmansworth, Hertfordshire, WD3 4LS
Approximate Gross Internal Area
106 Sq M / 1141 Sq Ft



Ground Floor



First Floor

Please note that the location of doors, windows and other items are approximate and this floorplan is to be used for illustrative purposes only. Unauthorized reproduction is prohibited.



REGISTERED OFFICE 2-4 PACKHORSE ROAD, GERRARDS CROSS, BUCKINGHAMSHIRE, ENGLAND, SL9 7QE. COMPANY NO. 07557114. VAT NO. GB211239453