



A superbly presented four bedroom home set with in a gated development
Vantage Mews, Northwood, HA6 2PW

ROBSONS

Asking Price: £3,750 pcm

A superbly presented four bedroom home set with in a gated development

Vantage Mews, Northwood, HA6 2PW

-
- GATED DEVELOPMENT • TOWN HOUSE • FOUR BEDROOMS • THREE BATHROOMS • LIVING ROOM • KITCHEN with APPLICANCES • DINNING ROOM • GOURND FLOOR W/C • GARAGE • UNFURNISHED
-

Description

A superbly presented four bedroom home set with in an extremely sought after gated development located just 0.3 miles from Northwood Underground Station and town centre. The accomodation is extremely well presented throughout and comprises, entrance hall, ground floor W/C, kitchen with fitted appliances, open plan style lounge/conservatory with patio doors leading out to the garden area, master bedroom with ensuite bathroom, second bedroom with ensuite bathroom, two further bedrooms and a family bathroom. The property also features a detached garage and a well-manicured rear garden. * An advance payment of one weeks rent is required to reserve this property *

Location

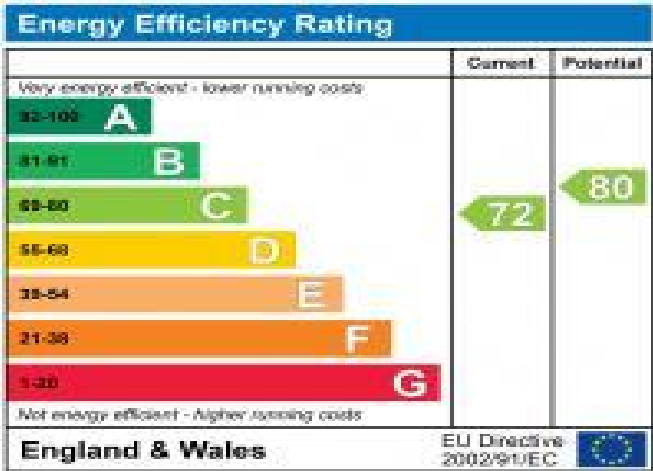
Central Northwood will satisfy your everyday requirements with an appealing mix of locally owned boutiques, coffee shops, restaurants and a conveniently placed Waitrose. Northwood is on the Metropolitan line and so offers quick and easy access to central London. The area is well served by private and state schools for all ages. Recreational facilities include a Fitness Centre, Golf Club and a Cricket Club. Major motorway links (M1, M25) and Heathrow are all within reach.



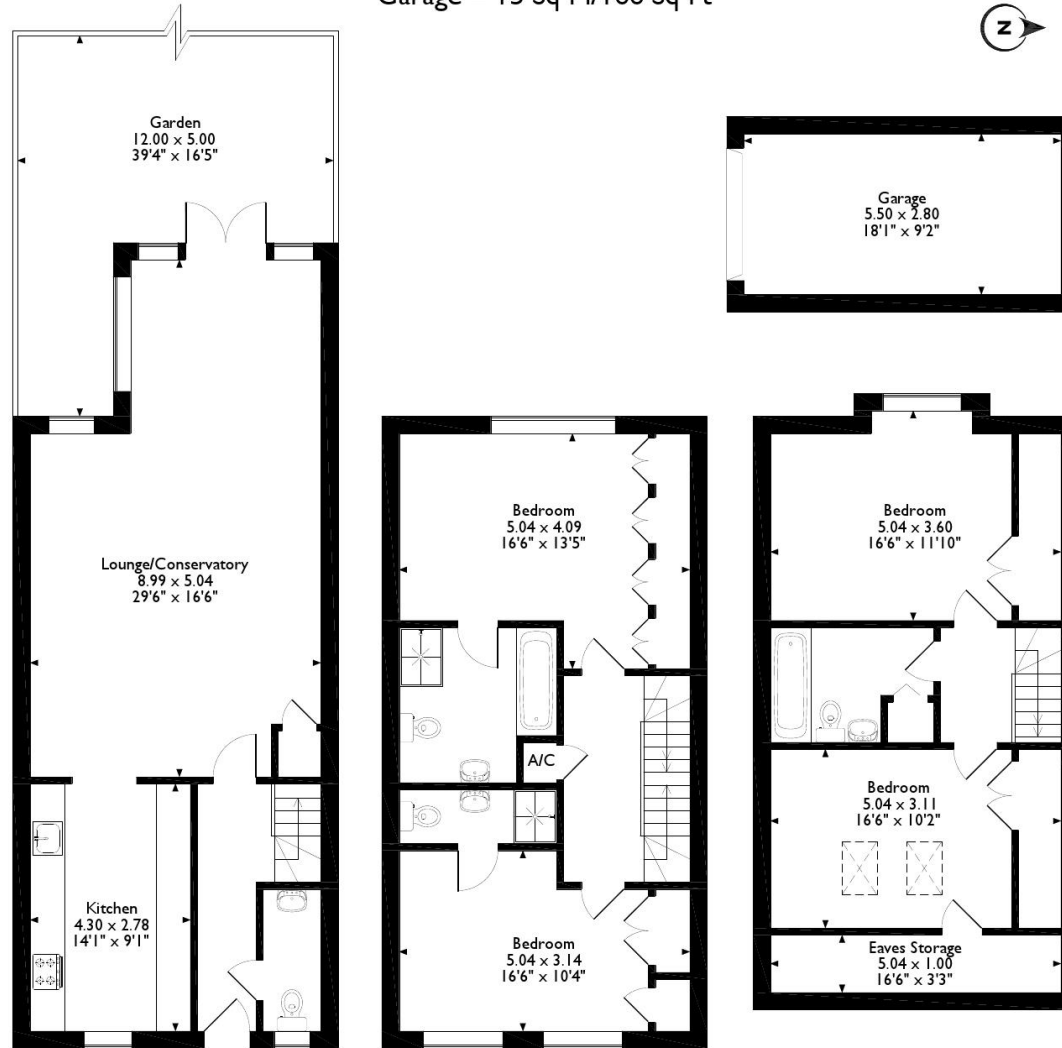


Additional Information

- Local Authority: Hillingdon
- Council Tax Band: G
- Deposit Amount: £4,326.00
- Reservation Payment: One weeks rent
- Energy Efficiency Rating: Band C
- Available Date: 31/07/2024



Vantage Mews, Northwood, Middlesex
 Approximate Gross Internal Area
 Main House = 158 Sq M/1709 Sq Ft
 Garage = 15 Sq M/166 Sq Ft



Ground Floor

First Floor

Second Floor

Please note that the location of doors, windows and other items are approximate and this floorplan is to be used for illustrative purposes only. Unauthorized reproduction is prohibited.



REGISTERED OFFICE 2-4 PACKHORSE ROAD, GERRARDS CROSS, BUCKINGHAMSHIRE, ENGLAND, SL9 7QE. COMPANY NO. 07557114. VAT NO. GB211239453