



A bright and spacious two bedroom apartment conveniently located
Dormans Close, Northwood, Middlesex HA6 2FX

ROBSONS

Asking Price: £1,550 pcm

A bright and spacious two bedroom apartment conveniently located

Dormans Close, Northwood, Middlesex HA6 2FX

-
- COMMUNAL ENTRANCE HALL
 - OPEN PLAN KITCHEN/RECEPTION ROOM
 - TWO BEDROOMS
 - BATHROOM
 - ELECTRIC HEATING
 - COMMUNAL GARDENS
 - GARAGE
 - UNFURNISHED
-

Description

A bright and spacious two bedroom apartment located within close proximity to Northwood Metropolitan line Station. The top floor apartment comprises, entrance hall, kitchen with fitted appliances, living room, modern bathroom, two double bedrooms with fitted storage and three hallway storage cupboards. The apartment also benefits from a garage in a nearby block & a large storage cupboard in the ground floor communal area of the building.

****An advance reservation of one weeks rent is required to secure this property****

Location

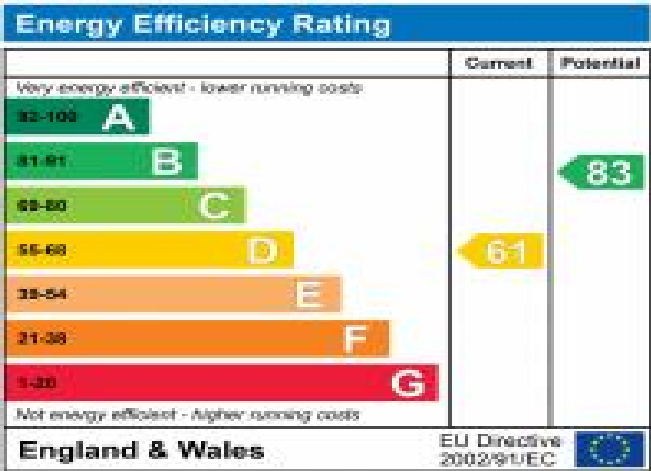
Northwood provides a range of shopping facilities including a Waitrose supermarket, a variety of restaurants and other amenities with the Metropolitan Line station providing access to Baker Street and the City. There is a plethora of state and private schooling together with a wide choice of recreational facilities, which include golf courses and fitness centres. The M1, M40 and M25 motorways are also accessible.





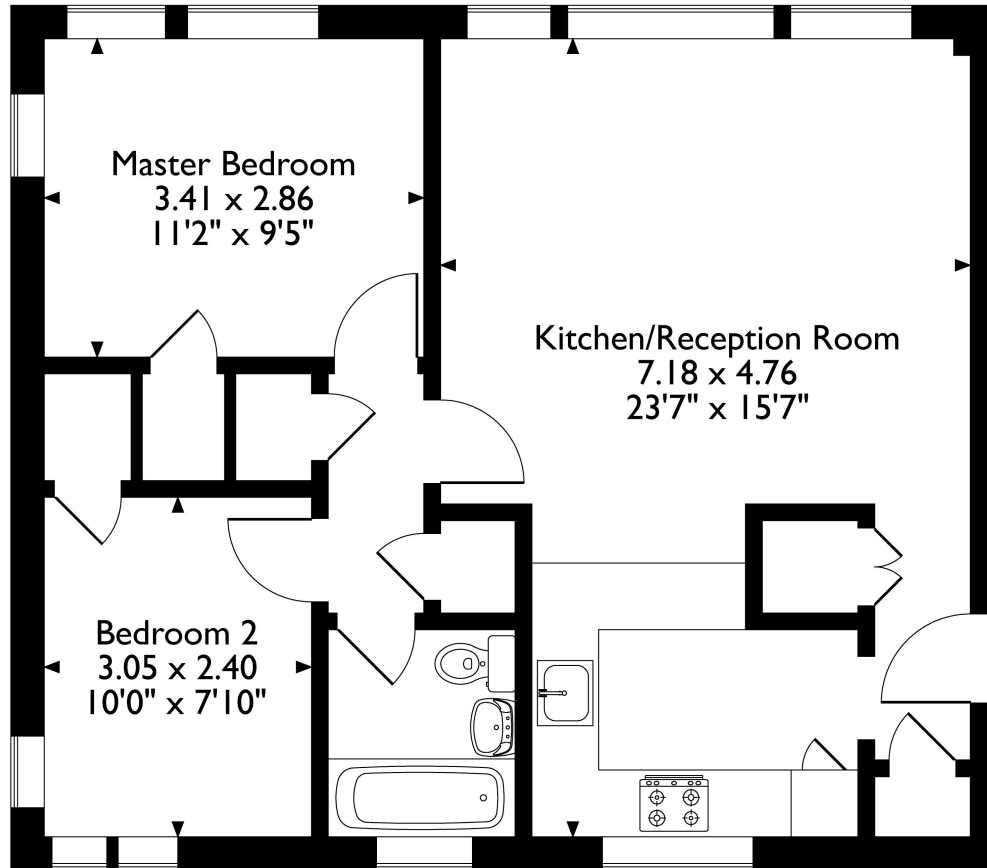
Additional Information

- Local Authority: Hillingdon
- Council Tax Band: D
- Deposit Amount: £1,788.00
- Reservation Payment: One weeks rent
- Energy Efficiency Rating: Band D
- Available Date: 13/06/2024



Dormans Close, Northwood, HA6 2FX

Approximate Gross Internal Area 60 Sq M/646 Sq Ft



Fifth Floor

Please note that the location of doors, windows and other items are approximate and this floorplan is to be used for illustrative purposes only. Unauthorized reproduction is prohibited.

