



A four bedroom spacious family home in a cul de sac location
Haywood Park, Chorleywood, Hertfordshire WD3 5DR

ROBSONS

Asking Price: £3,575 pcm

A four bedroom spacious family home in a cul de sac location

Haywood Park, Chorleywood, Hertfordshire WD3 5DR

• ENTRANCE HALL • LOUNGE OPEN PLAN TO SITTING ROOM • LUXURY KITCHEN OPEN PLAN TO DINING ROOM • GUEST CLOAKROOM • MASTER BEDROOM WITH FITTED WARDROBES AND ENSUITE SHOWER ROOM • THREE FURTHER BEDROOMS • FAMILY BATHROOM • REAR GARDEN • DRIVEWAY WITH AMPLE OFF STREET PARKING • DOUBLE GARAGE • UNFURNISHED

Description

Haywood Park occupies a cul de sac location just off South Park Avenue and less than half a mile from Chorleywood Common. Internally the property offers spacious family accommodation extensively refurbished yet with potential to extend or develop STPP. The house sits on an attractively landscaped plot in this popular residential setting.

The property has been upgraded and modernised by the current owners to a high standard incorporating many additional features.

N.B. These photos are not current

** An advance reservation payment of one weeks rent is required to secure the property **

Location

Chorleywood village with its eclectic mix of shops, cafés is approximately a mile away. The station provides a frequent metropolitan line service to London Baker Street and The City as well as the Chiltern Turbo to Marylebone. Communications are excellent with junction 18 of the M25 close by with links to the major motorway network and airports.

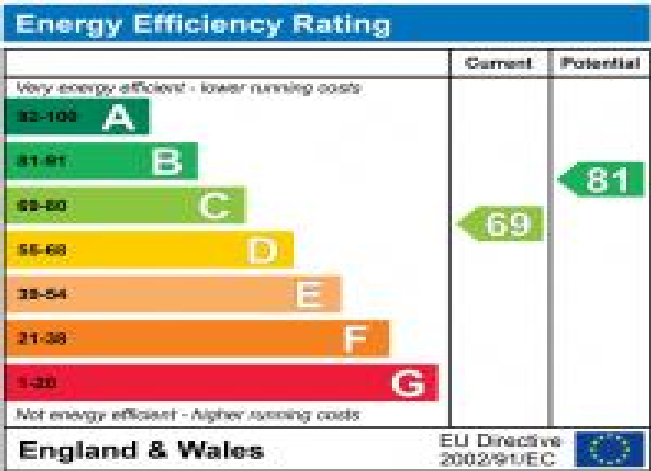
The area is well served by highly regarded private and state schools for all ages. Chorleywood offers everything for a sporting life, from cricket, football, tennis, horse riding and golf. Water sports are also available at the Aquadrome in Rickmansworth.



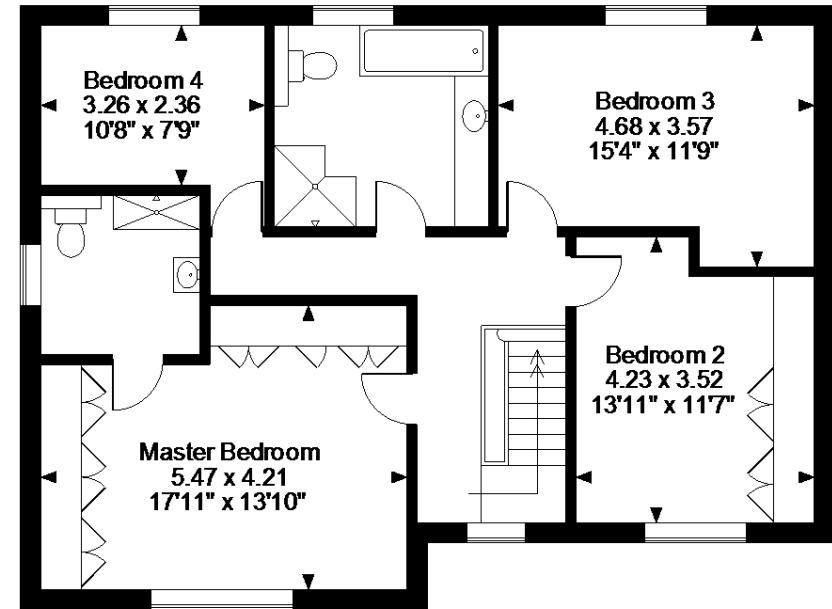
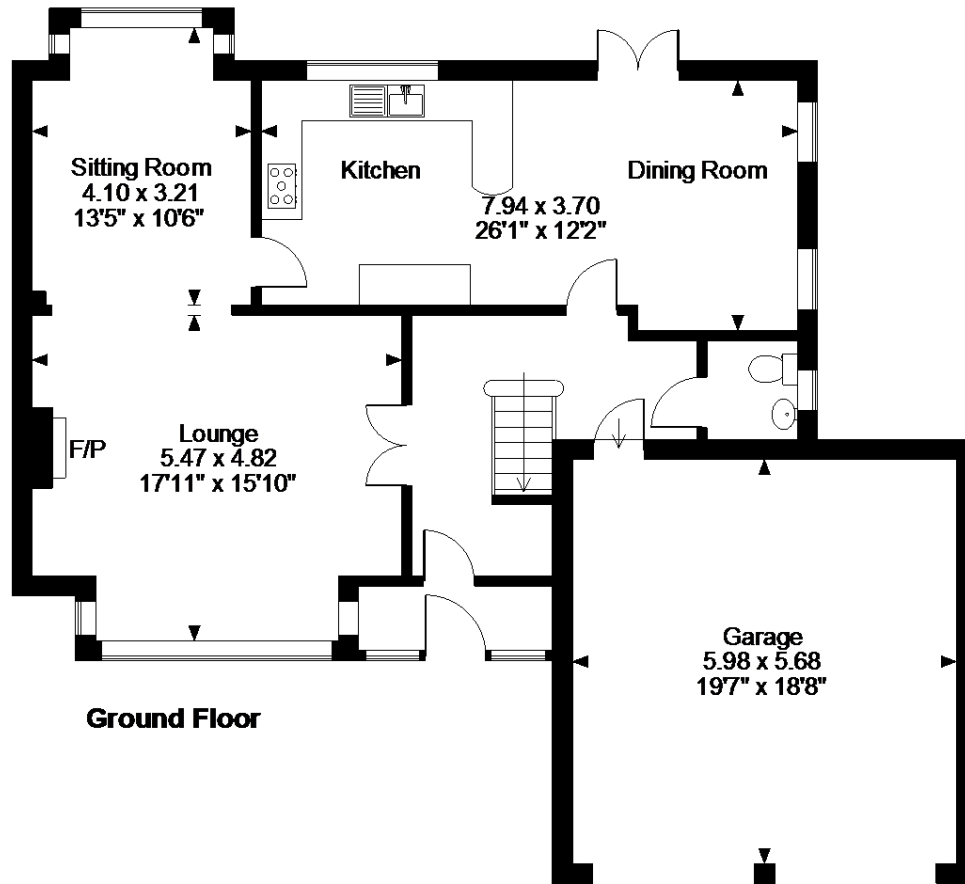


Additional Information

- Local Authority: Three Rivers
- Council Tax Band: G
- Deposit Amount: £4,125.00
- Reservation Payment: One weeks rent
- Energy Efficiency Rating: Band C
- Available Date: 15/07/2024



Haywood Park, Chorleywood
Main House gross internal area = 1,872 sq ft / 174 sq m
Garage gross internal area = 366 sq ft / 34 sq m
Total gross internal area = 2,238 sq ft / 208 sq m



FOR ILLUSTRATIVE PURPOSES ONLY - NOT TO SCALE

The position & size of doors, windows, appliances and other features are approximate only.
© ehouse. Unauthorised reproduction prohibited. Drawing ref. dig/8198071/MMC



REGISTERED OFFICE 2-4 PACKHORSE ROAD, GERRARDS CROSS, BUCKINGHAMSHIRE, ENGLAND, SL9 7QE. COMPANY NO. 07557114. VAT NO. GB211239453