



A two bedroom ground floor maisonette close to the town centre
The Glen, Northwood, Middlesex HA6 2UR

ROBSONS

Asking Price: £2,150 pcm

A two bedroom ground floor maisonette close to the town centre

The Glen, Northwood, Middlesex HA6 2UR

• ENTRANCE HALLWAY • RECEPTION ROOM • DINING ROOM • KITCHEN • TWO DOUBLE BEDROOMS • BATHROOM • WELL KEPT COMMUNAL GARDENS • GARAGE IN BLOCK • RESIDENTS PERMIT PARKING • DOUBLE GLAZING • UNFURNISHED

Description

Peacefully nestled in a highly desirable development just a few hundred yards from the centre of Northwood is this two double bedroom ground floor maisonette. The property has it's own private entrance which leads to a welcoming entrance hallway. There is a double aspect living room flowing through to a separate dining room. The kitchen is fitted with ample storage cupboards, integrated oven and hob, plus space for appliances. There are two double bedrooms, both benefitting from fitted wardrobes and a family bathroom with separate a shower and bath. The Glen is a private development in the heart of Northwood and designated as a Conservation Area.

** An advance reservation payment of one weeks rent is required to secure the property **

Location

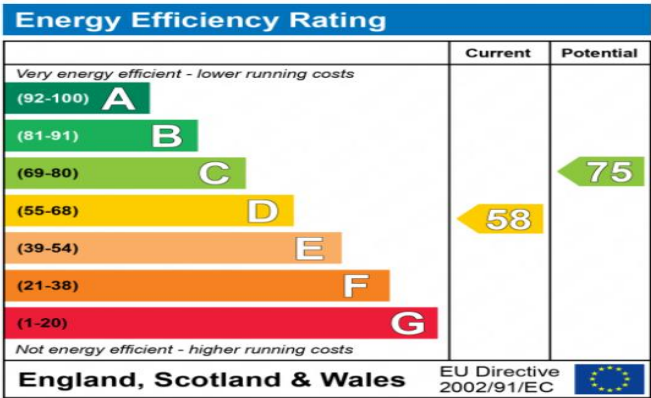
Northwood provides a range of shopping facilities, a Waitrose supermarket, restaurants and the Metropolitan Line Station providing access to Baker Street and the city beyond. The area has a range of both private and state schools. Places of worship and recreational facilities are also well catered for in the surrounding area and major motorway links to M25 and M1 are nearby.





Additional Information

- District Council: London Borough of Hillingdon
- Council Tax Band: E
- Deposit Amount: £2,428.00
- Reservation Payment: One weeks rent
- Energy Efficiency Rating: Band D
- Available Date: 08/10/2022

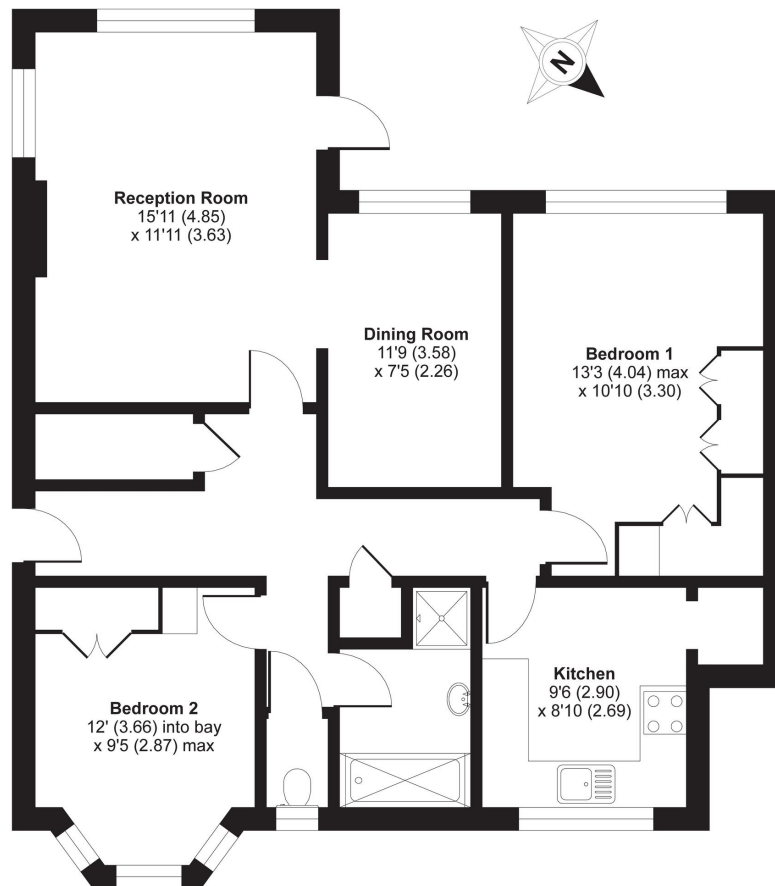


The energy efficiency rating is a measure of the overall efficiency of a home. The higher the rating the more energy efficient the home is and the lower the fuel bills will be.



The Glen, North Approach, Northwood, HA6 2UR

APPROX. GROSS INTERNAL FLOOR AREA 897 SQ FT 83.3 SQ METRES



GROUND FLOOR

Whilst every attempt has been made to ensure the accuracy of the floor plan contained here, measurements of doors, windows and rooms are approximate and no responsibility is taken for any error, omission or misstatement. These plans are for representation purposes only as defined by RICS Code of Measuring Practice and should be used as such by any prospective purchaser. Specifically no guarantee is given on the total square footage of the property if quoted on this plan. Any figure given is for initial guidance only and should not be relied on as a basis of valuation.

Copyright nichecom.co.uk 2019 Produced for Robsons Lettings REF : 499501



REGISTERED OFFICE 2-4 PACKHORSE ROAD, GERRARDS CROSS, BUCKINGHAMSHIRE, ENGLAND, SL9 7QE. COMPANY NO. 07557114. VAT NO. GB211239453