



Hazelmere Road, NW6

£1,350,000

Dexters



Hazelmere Road, London, NW6

A fully extended freehold period home, beautifully presented over three floors with a west-facing private garden, available chain-free, and located in prime Queen's Park.

The ground floor presents a double reception filled with natural light, with solid wooden floors and original fireplaces, this level creates a great entertaining space that flows through to the open plan fully integrated kitchen. The bi-folding doors at the rear lead to the mature west-facing garden.

The first floor comprises of three spacious double bedrooms, along with a family bathroom. The extended roof space occupies the fourth bedroom, en suite shower, and extensive storage under the eaves.

Hazelmere Road is quiet residential street, with easy access to the shops, cafes, bars and restaurants on Salusbury Road, and green open spaces of Queen's Park. Transport links include Queen's Park (Bakerloo & Overground) and Kilburn High Road

Features

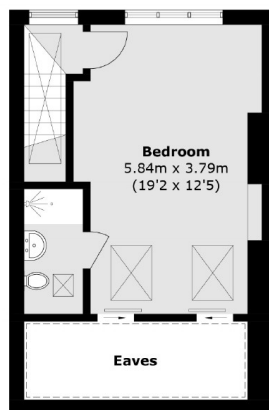
Freehold House
Four Double Bedrooms
Two Bathrooms + WC
Chain-Free
Prime Queens Park
Close To Local Amenities



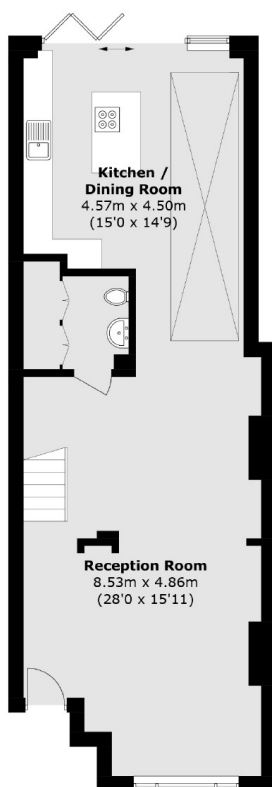




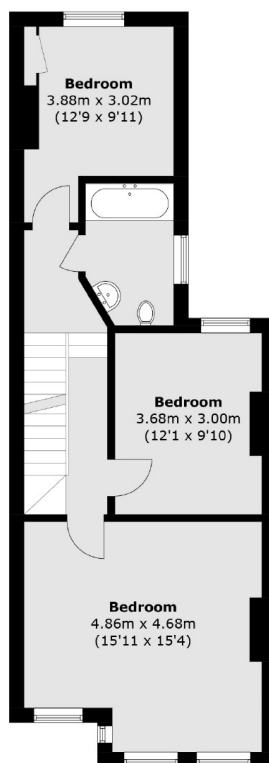
Hazelmere Road, London, NW6



Second Floor



Ground Floor



First Floor

Total area (approx.): 154.3 sq. m (1,660.7 sq. ft)
(Excluding Eaves)

Dexters

Kensal Rise & Queen's Park
62 Chamberlayne Road, Kensal
Rise, London, NW10 3JJ

Sales
020 8600 3100

Energy Rating: D. We aim to make our particulars both accurate and reliable. However they are not guaranteed; nor do they form part of an offer or contract. If you require clarification on any points then please contact us, especially if you're traveling some distance to view. Please note that appliances and heating systems have not been tested and therefore no warranties can be given as to their good working order.

RICS | Regulated
Estate Agent
and Letting Agent

dexters.co.uk