



Minet Avenue, NW10

£715,000

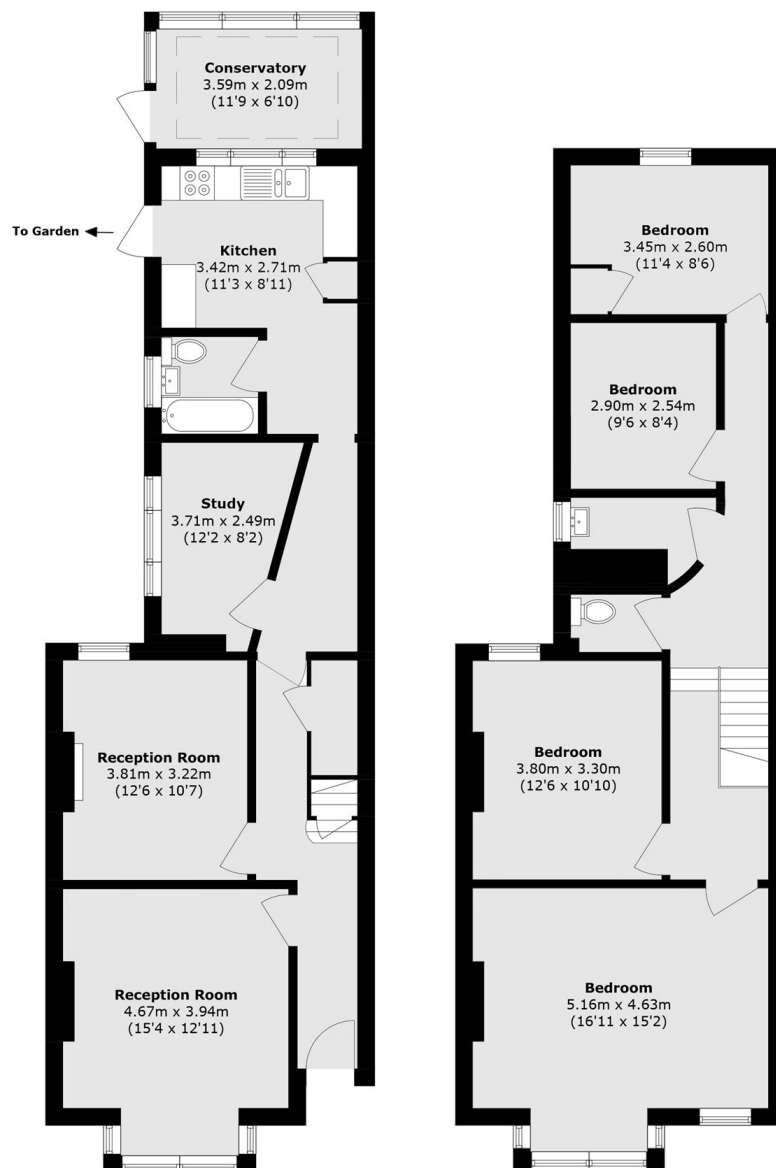
This mid-terraced Victorian house is arranged over two floors, offering excellent potential to extend to the rear and into the loft (subject to planning). The property features two reception rooms, a study, and a rear conservatory all on the ground floor with four bedrooms and a bathroom on the first floor.

Minet Avenue a tree-lined quiet residential street located close to the shops and local amenities on Harlesden High Street. Transport links includes Harlesden (Bakerloo & Overground), Willesden Junction (Bakerloo & Overground), numerous bus routes, and the newly developed Old Oak Common station.

Features

- Freehold
- Four Bedrooms
- Two Reception Rooms
- Separate Kitchen
- Potential To Extend
- Chain-Free

Minet Avenue, London, NW10



Ground Floor

First Floor

Total area (approx.): 142.2 sq. m (1530.6 sq. ft)
Outbuilding area (approx.): 7.5 sq. m (80.7 sq. ft)

Dexters

Kensal Rise & Queen's Park
62 Chamberlayne Road
London
NW10 3JJ

Sales
020 8600 3100

Energy Rating: E. We aim to make our particulars both accurate and reliable. However they are not guaranteed; nor do they form part of an offer or contract. If you require clarification on any points then please contact us, especially if you're traveling some distance to view. Please note that appliances and heating systems have not been tested and therefore no warranties can be given as to their good working order.

RICS | Regulated
Estate Agent
and Letting Agent

dexters.co.uk