



## Purves Road, NW10

### £775,000

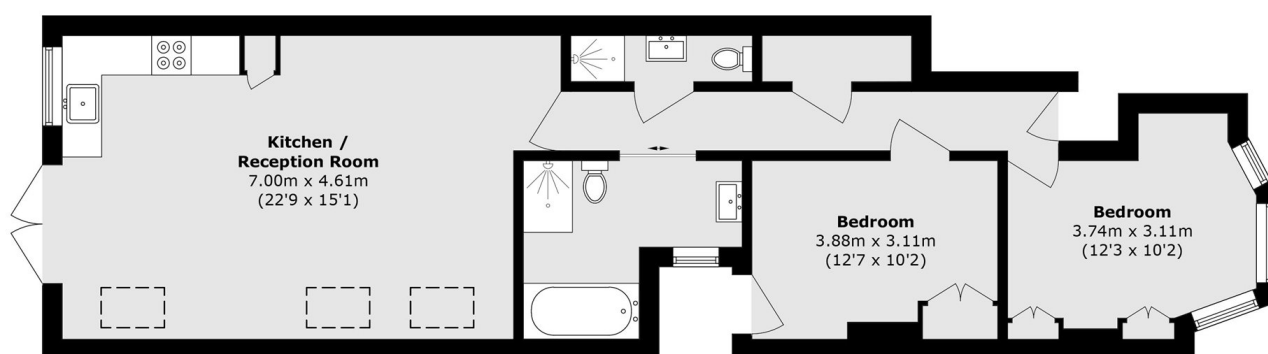
With an excellent specification throughout and having recently undergone significant renovations and an extension, this two double bedroom ground floor flat provides a large open plan kitchen and reception room to the rear leading through to the garden, built-in storage, and is located in prime Kensal Rise.

Purves Road is a popular residential street close to the shops, cafes, restaurants and bars on Chamberlayne Road and College Road, and the nearby green open spaces of Queen's Park. Transport links include Kensal Rise (Overground) and Kensal Green (Bakerloo & Overground).

### Features

- Two Double Bedrooms
- Two Bathrooms
- Open Plan Kitchen & Reception
- Garden Flat
- Excellent Condition
- Prime Location

# Purves Road, London, NW10



Total area (approx.): 76.2 sq. m (820.2 sq. ft)