



## Kings Road, NW10

£461 Per week

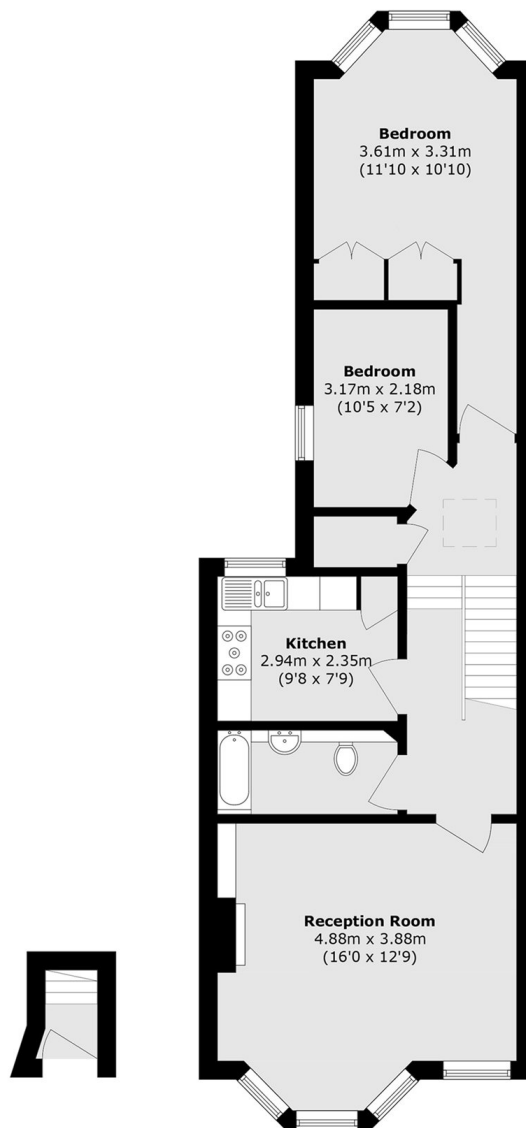
Finished to an extremely high standard, this spacious two double bedroom first floor flat benefits from having a generous reception room, separate kitchen and storage throughout.

Kings Road is a quiet residential road located near to the green open spaces of Queen's Park, with access to the shops, cafes, restaurants and bars in Willesden Green and Kensal Rise. Transport links include Willesden Green (Jubilee) and Kensal Rise (Overground).

### Features

- Two double bedrooms
- Separate kitchen
- Spacious living room
- First floor
- Close to transport
- Period features

# Kings Road, London, NW10



**Ground Floor**

**First Floor**

Total area (approx.): 69.8 sq. m (751.3 sq. ft)