



Third Avenue, W10

£900,000

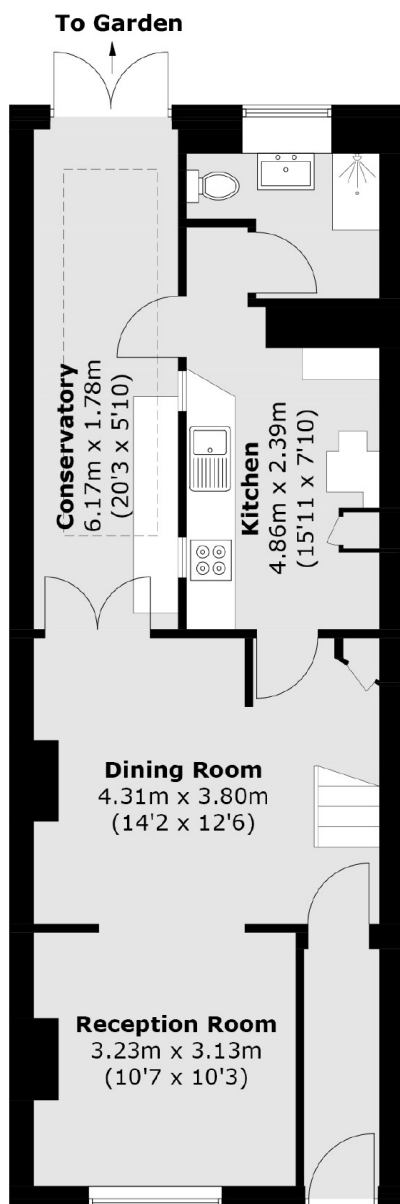
A spacious three double bedroom Victorian house, configured over two floors, situated in the popular location that is the Queen's Park Conservation Area. The property benefits from having a double reception with a separate kitchen, a conservatory to the side at the rear, and has the potential to be extended, and is available chain-free.

Third Avenue is popular street in a conservation area with access to the shops, cafes, restaurants and bars in Kensal Rise and Queen's Park, with Maida Vale and Notting Hill close by. Transport links include Queen's Park (Bakerloo & Overground) and Westbourne Park (Circle & Hammersmith).

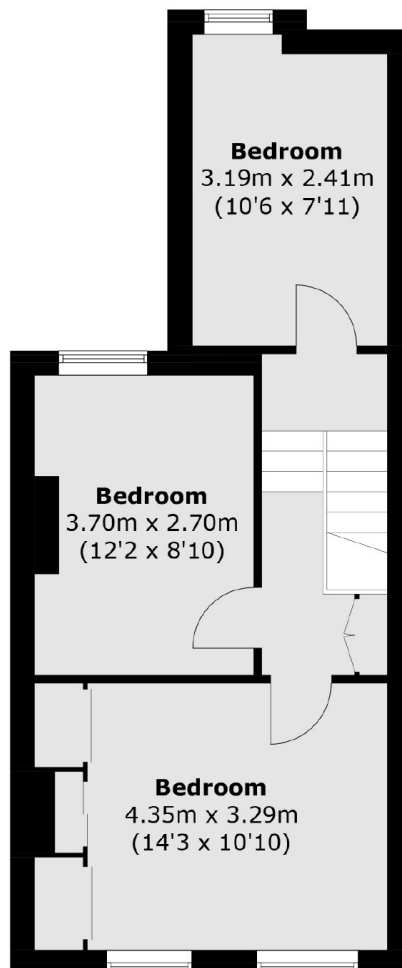
Features

- Freehold
- Three Double Bedrooms
- Double Reception Room
- Separate Kitchen
- Potential To Extend
- Chain-Free

Third Avenue, London, W10



Ground Floor



First Floor

Total area (approx.): 95.7 sq. m (1,030.1 sq. ft)