



Clifford Gardens, NW10

£1,615 Per week

Dexters



Clifford Gardens, NW10

This beautifully renovated four-bedroom, three bathroom Victorian home combines classic period features with modern design to create a spacious and comfortable family home. The entire property has been carefully updated from top to bottom, blending style, comfort, and smart technology.

Inside, you'll find a large kitchen extension with high ceilings that make the space feel bright and open. The open-plan layout connects the kitchen, dining, and living areas, making it perfect for family life. Underfloor heating keeps the home warm and cozy throughout the year.

The slim Cortizo Cor Vision patio doors open up to the professionally landscaped rear garden, creating a smooth flow between inside and outside. The garden includes a lovely pergola for relaxing and a built-in BBQ with an outdoor kitchen for easy entertaining. The home also has a modern smart security system with an alarm and CCTV for peace of mind. Inside, there's a built-in 70 TV and speaker system for great entertainment.

Clifford Gardens is just a short walk from Kensal Green and Queen's Park stations, providing easy access to Central London via the Bakerloo Line and London Overground. Families will benefit from nearby schools like Princess Frederica's School and Ark Franklin Academy, making this a great area for those with children.

Features

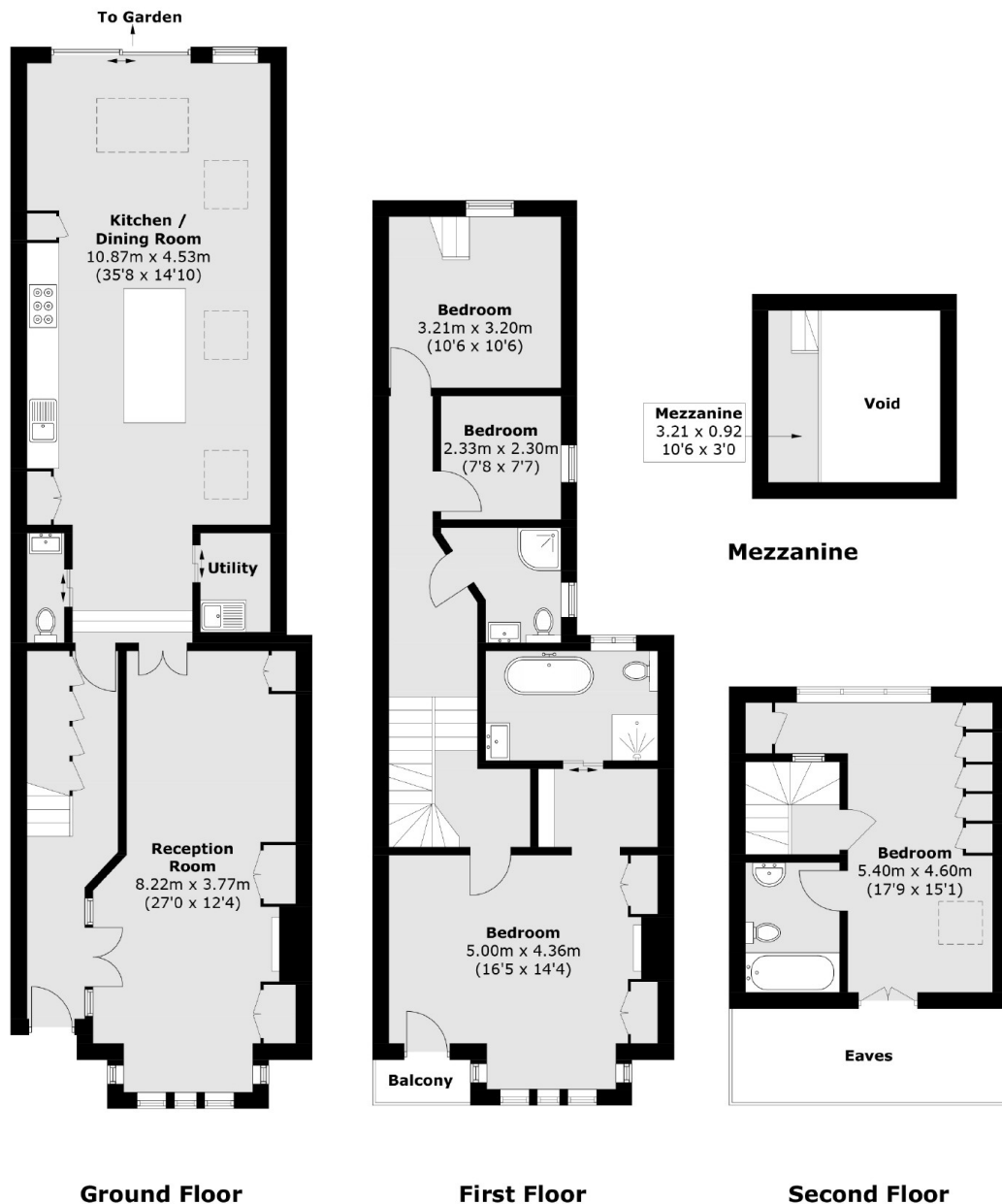
- Four Bedrooms
- Master Suite
- Completely Renovated
- Immaculate Condition
- Prime Kensal Rise
- Victorian Conversion







Clifford Gardens, London, NW10



Total area (approx.): 180.9 sq. m (1,947.1 sq. ft)
(Excluding Eaves, Void & Including Mezzanine)
Balcony area (approx.): 1.4 sq. m (15.1 sq. ft)