

## St. Johns Avenue, NW10

£507 Per calendar month

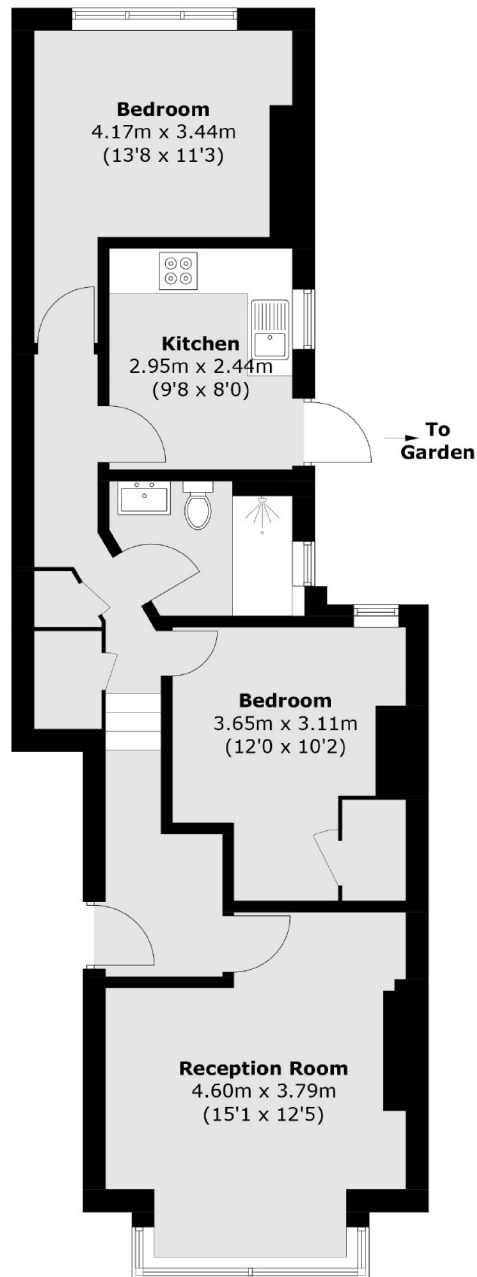
A spacious two double bedroom ground floor flat in a Victorian conversion. The property benefits from a separate kitchen and living room and has a large private garden.

St. Johns Avenue is a residential street in close proximity to the shops and amenities in Harlesden, and Roundwood Park. Transport links include Harlesden (Bakerloo & Overground) and Willesden Junction (Bakerloo & Overground).

### Features

- Two Double Bedrooms
- Rear Private Garden
- Separate Kitchen
- Close to Transport links
- Modern
- Period Conversion

St. Johns Avenue,  
London, NW10



Total area (approx.): 61.2 sq. m (658.7 sq. ft)

**Dexters**

Kensal Rise & Queen's Park  
62 Chamberlayne Road  
London  
NW10 3JJ  
Lettings  
020 8600 3101

Energy Rating: D. We aim to make our particulars both accurate and reliable. However they are not guaranteed; nor do they form part of an offer or contract. If you require clarification on any points then please contact us, especially if you're traveling some distance to view. Please note that appliances and heating systems have not been tested and therefore no warranties can be given as to their good working order.

 **RICS** | Regulated  
Estate Agent  
and Letting Agent

[dexters.co.uk](https://www.dexters.co.uk)