



High Road, NW10

£250,000

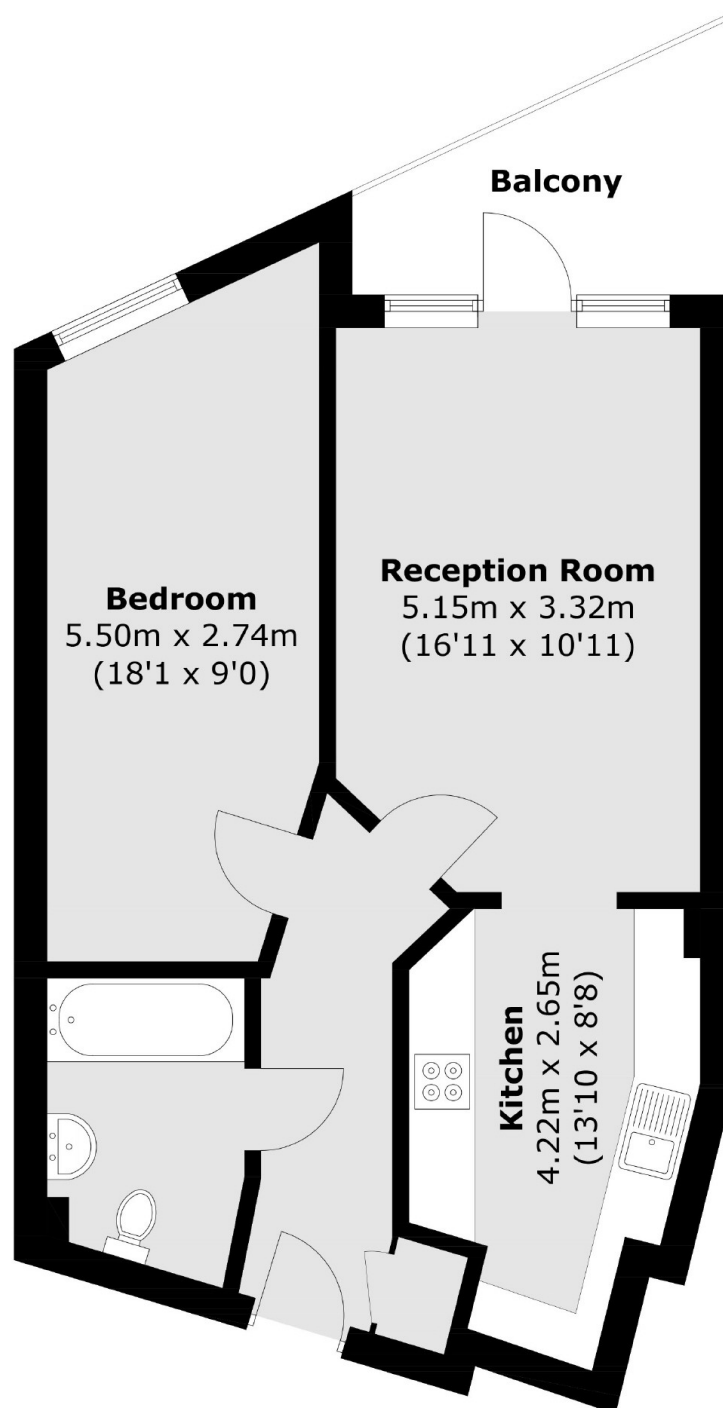
Set in a secure modern development is this one bedroom flat on the first floor with lift access, and a balcony. The property has a semi-separate kitchen leading through to the reception room, is near to the popular Roundwood Park, and a great option for a first-time buyer.

Hornby Court is in close proximity to the shops and amenities in Harlesden and Willesden. Transport links include Harlesden (Bakerloo & Overground) and Willesden Junction (Bakerloo & Overground).

Features

- One Bedroom
- Semi-Separate Kitchen
- Balcony
- Secure Modern Development
- Lift Access
- Close To Local Amenities

High Road, London, NW10



Total area (approx.): 53.3 sq. m (573.7 sq. ft)
Balcony: 5.8 sq. m (62.3 sq. ft)

Dexters

Kensal Rise & Queen's Park
62 Chamberlayne Road
London
NW10 3JJ

Sales
020 8600 3100

Energy Rating: B. We aim to make our particulars both accurate and reliable. However they are not guaranteed; nor do they form part of an offer or contract. If you require clarification on any points then please contact us, especially if you're traveling some distance to view. Please note that appliances and heating systems have not been tested and therefore no warranties can be given as to their good working order.

 **RICS** | Regulated
Estate Agent
and Letting Agent

[dexters.co.uk](https://www.dexters.co.uk)