



Beethoven Street, W10

£500,000

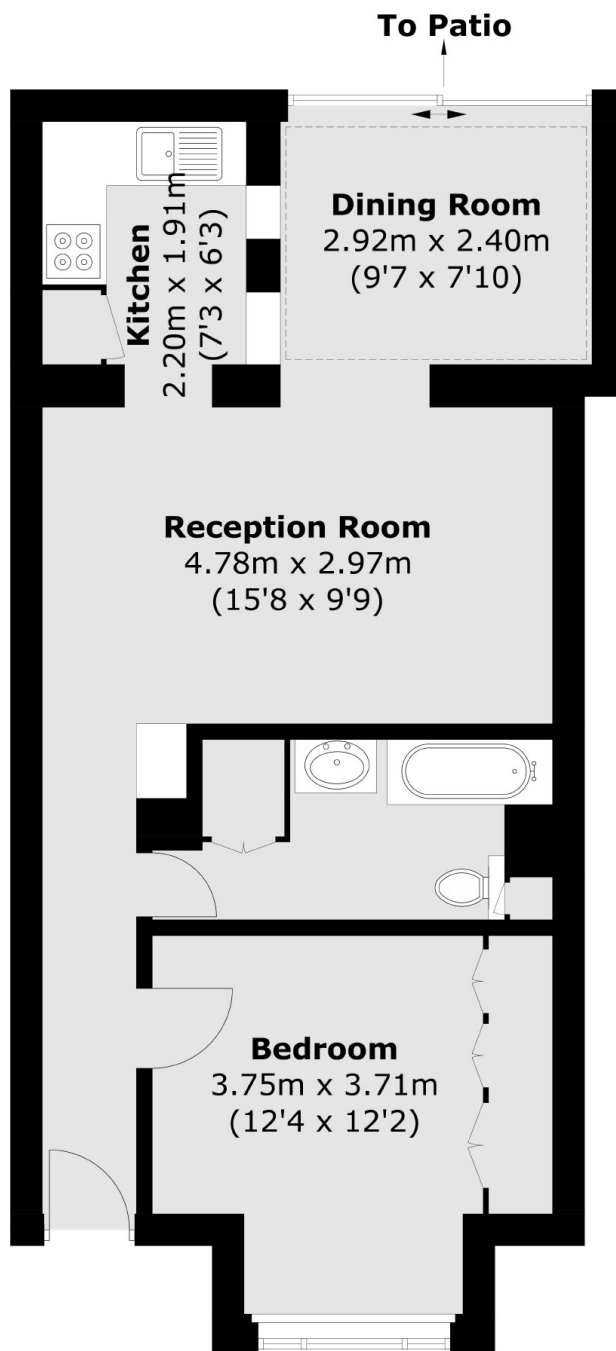
A light and spacious one bedroom flat on the lower ground floor with its own entrance and private garden. The property has a large bedroom with built-in storage to the front, a separate kitchen, a reception room and conservatory leading through to the garden, has a share in the freehold, and is available chain-free.

Beethoven Street is close to the shops, cafes, restaurants and bars on Chamberlayne Road and Salusbury Road, with Ladbrooke Grove nearby. Transport links include Queen's Park (Bakerloo & Overground), Kensal Rise (Overground), and Kensal Green (Bakerloo & Overground),

Features

- One Bedroom
- Garden Flat
- Separate Kitchen
- Own Entrance
- Share Of Freehold
- Chain-Free

Beethoven Street,
London, W10



Total area (approx.): 52.5 sq. m (565.1 sq. ft)

Dexters

Kensal Rise & Queen's Park
62 Chamberlayne Road
London
NW10 3JJ
Sales
020 8600 3100

Energy Rating: C. We aim to make our particulars both accurate and reliable. However they are not guaranteed; nor do they form part of an offer or contract. If you require clarification on any points then please contact us, especially if you're traveling some distance to view. Please note that appliances and heating systems have not been tested and therefore no warranties can be given as to their good working order.

RICS | Regulated
Estate Agent
and Letting Agent

dexters.co.uk