



## Drayton Road, NW10

### £450,000

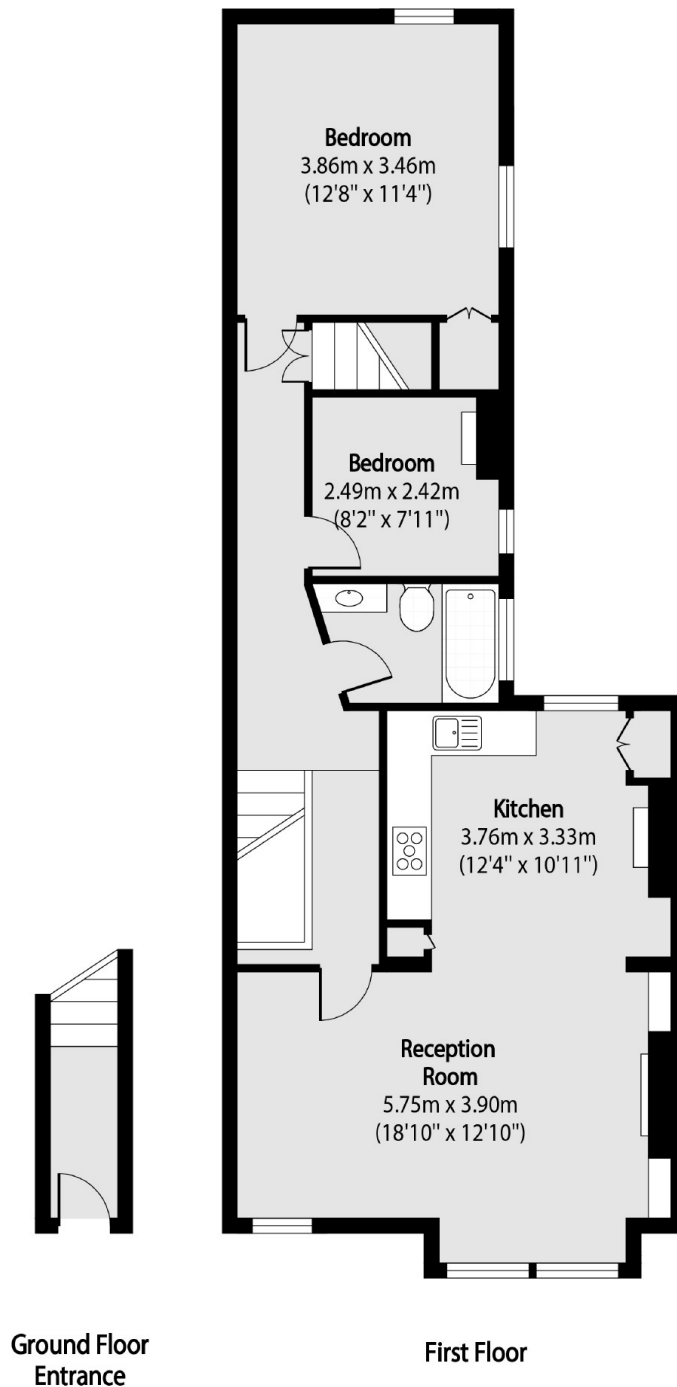
A spacious two double bedroom first floor flat with an open plan kitchen and reception room to the front, and the bedrooms to the rear. The property has access to its own south facing garden, has a share in the freehold, with the loft demised, and is available chain-free.

Drayton Road is a residential street located next to Roundwood Park, and in close proximity to the shops and amenities in Harlesden. Transport links include Harlesden (Bakerloo & Overground) and Willesden Junction (Bakerloo & Overground).

### Features

- Two Double Bedrooms
- First Floor Flat
- South Facing Garden
- Share Of Freehold
- Potential To Extend
- Chain-Free

# Drayton Road, London, NW10



Total area (approx): 76.11 sq m (819 sq. ft)

## Dexters

Kensal Rise & Queen's Park  
62 Chamberlayne Road  
London  
NW10 3JJ  
Sales  
020 8600 3100

Energy Rating: C. We aim to make our particulars both accurate and reliable. However they are not guaranteed; nor do they form part of an offer or contract. If you require clarification on any points then please contact us, especially if you're traveling some distance to view. Please note that appliances and heating systems have not been tested and therefore no warranties can be given as to their good working order.

 **RICS** | Regulated  
Estate Agent  
and Letting Agent

[dexters.co.uk](https://www.dexters.co.uk)