



## Mount Pleasant Road, NW10

£750 Per week

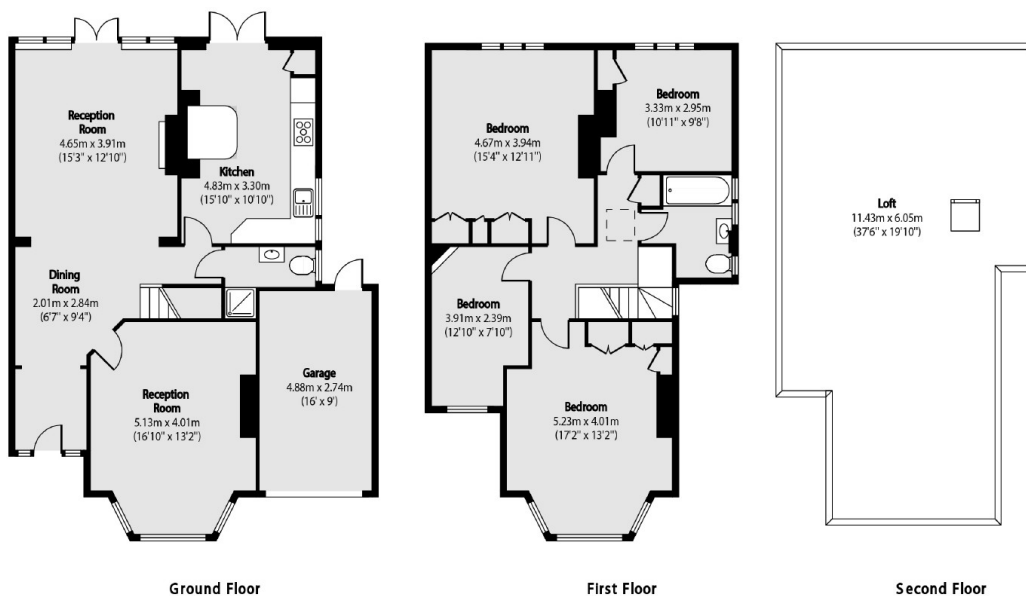
A spacious semi detached four bedroom family home with a generous private garden, two receptions, separate kitchen, garage and off street parking on the driveway.

Mount Pleasant Road is a quiet residential street near to the shops, cafes and amenities of Chamberlayne Road and Salusbury Road. Kensal Rise and Brondesbury Park stations are nearby.

### Features

- Four Bedrooms
- Off Street Parking
- Large Garden
- Garage
- Two Receptions
- Semi Detached

# Mount Pleasant Road, London, NW10



Total area (approx): 156.44 sq m (1684 sq. ft)

Loft total area (approx): 59.73 sq m (643 sq. ft)

## Dexters

Kensal Rise & Queen's Park  
62 Chamberlayne Road  
London  
NW10 3JJ  
Lettings  
020 8600 3101

Energy Rating: . We aim to make our particulars both accurate and reliable. However they are not guaranteed; nor do they form part of an offer or contract. If you require clarification on any points then please contact us, especially if you're traveling some distance to view. Please note that appliances and heating systems have not been tested and therefore no warranties can be given as to their good working order.

 **RICS** | Regulated  
Estate Agent  
and Letting Agent

[dexters.co.uk](https://www.dexters.co.uk)