



Lothrop Street, W10

£975,000

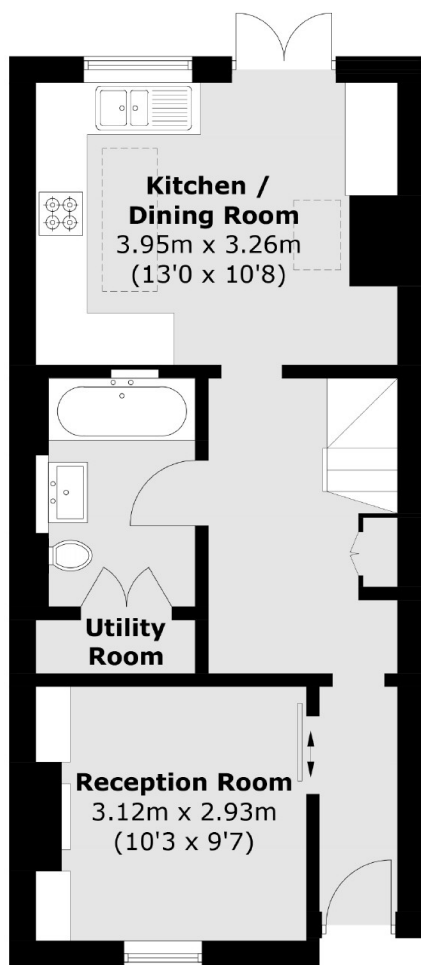
A popular mid-terrace Victorian cottage in the heart of the Queens Park Conservation Area, configured over three floors, with a separate reception room, and a fully integrated kitchen and dining room to the rear leading through the garden. Built-in storage is located throughout, with further eaves storage to the front and rear of the loft room.

Lothrop Street is a quiet residential road in close proximity to the shops, cafes, restaurants and bars in Queen's Park and Kensal Rise, with Maida Vale and Notting Hill closeby. Transport links include Queen's Park (Bakerloo & Overground) and Kensal Rise (Overground).

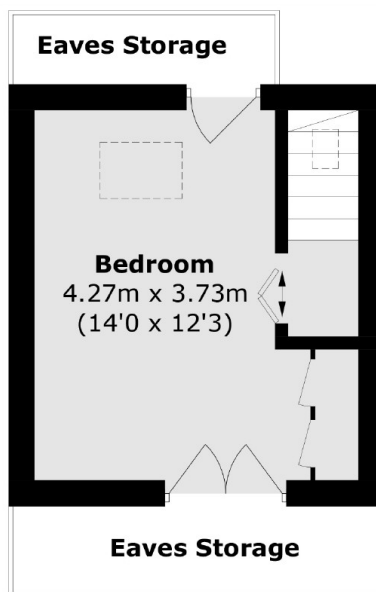
Features

- Freehold
- Three Bedrooms
- Separate Reception Room
- Combined Kitchen & Dining
- Bathroom & WC
- Close To Local Amenities

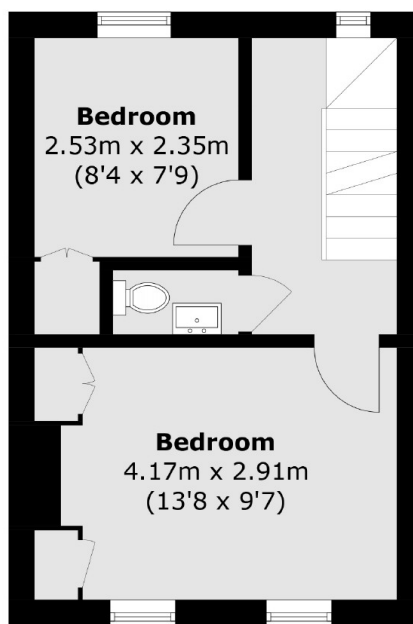
Lothrop Street, London, W10



Ground Floor



Second Floor



First Floor

Total area (approx.): 84.5 sq. m (909.4 sq. ft)
(Excluding Eaves Storage)