



## College Road, NW10

### £700,000

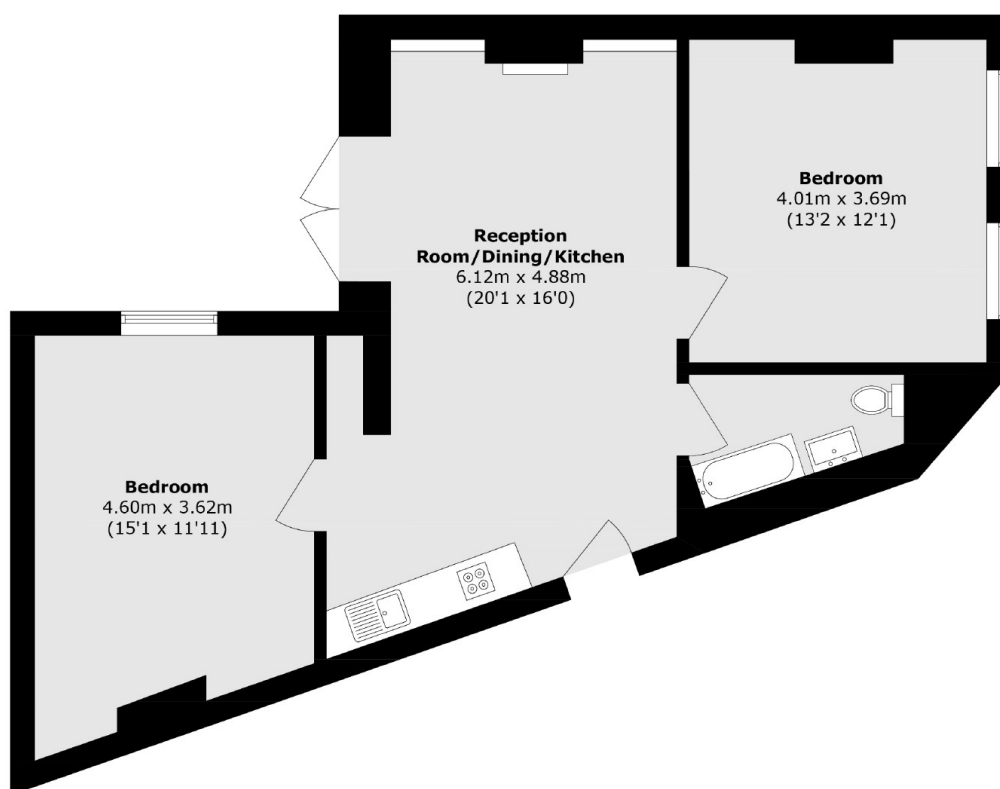
A spacious two double bedroom ground floor flat in a Victorian conversion, with own entrance. The property includes an open plan kitchen and reception room, has the potential to be extended, is in great condition throughout, and is available chain-free.

College Road is a tree-lined street that provides access to the shops, cafes, restaurants and bars on Chamberlayne Road and College Road, with the green open spaces of Queen's Park nearby. Transport links include Kensal Green (Bakerloo & Overground) and Kensal Rise (Overground).

### Features

- Two Double Bedrooms
- Own Entrance
- Garden
- Share Of Freehold
- Potential To Extend
- Close To Transport Links

# College Road, London, NW10



Total area (approx.): 66.0 sq. m (710.4 sq. ft)