



## Hawthorn Road, NW10

### £485,000

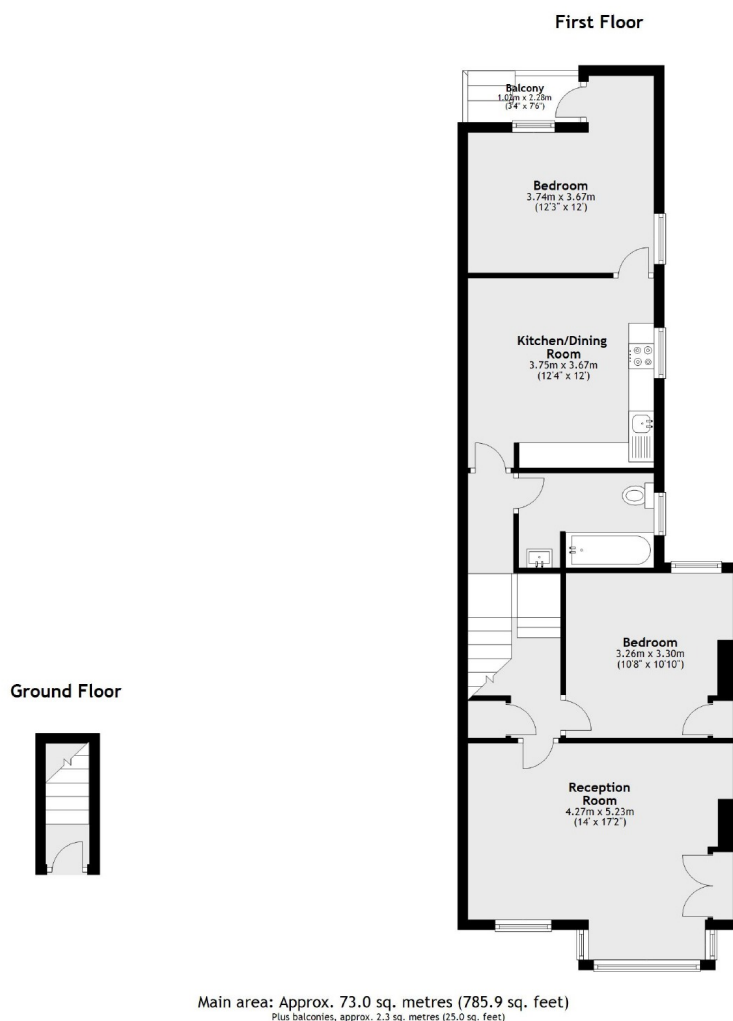
A light and spacious two double bedroom first floor flat in an Edwardian conversion, with a private garden. The property benefits from having a large reception room to the front with a bay window and high ceilings, a separate fully integrated modern kitchen to the rear, and is available chain-free.

Hawthorn Road is located next to Roundwood Park, nestled between Kensal Rise and Willesden Green. Transport links include Willesden Green (Jubilee), Willesden Junction (Bakerloo & Overground), along with multiple bus routes.

### Features

- Two Double Bedrooms
- First Floor Flat
- Separate Eat-In Kitchen
- Private Garden
- Chain-Free
- Close To Local Amenities

# Hawthorn Road, London, NW10



Main area: Approx. 73.0 sq. metres (785.9 sq. feet)  
Plus balconies, approx. 2.3 sq. metres (25.0 sq. feet)

## Dexters

Kensal Rise & Queen's Park  
62 Chamberlayne Road  
London  
NW10 3JJ  
Sales  
020 8600 3100

Energy Rating: C. We aim to make our particulars both accurate and reliable. However they are not guaranteed; nor do they form part of an offer or contract. If you require clarification on any points then please contact us, especially if you're traveling some distance to view. Please note that appliances and heating systems have not been tested and therefore no warranties can be given as to their good working order.

 **RICS** | Regulated  
Estate Agent  
and Letting Agent

[dexters.co.uk](https://www.dexters.co.uk)