



## Brondesbury Villas, NW6

£650,000

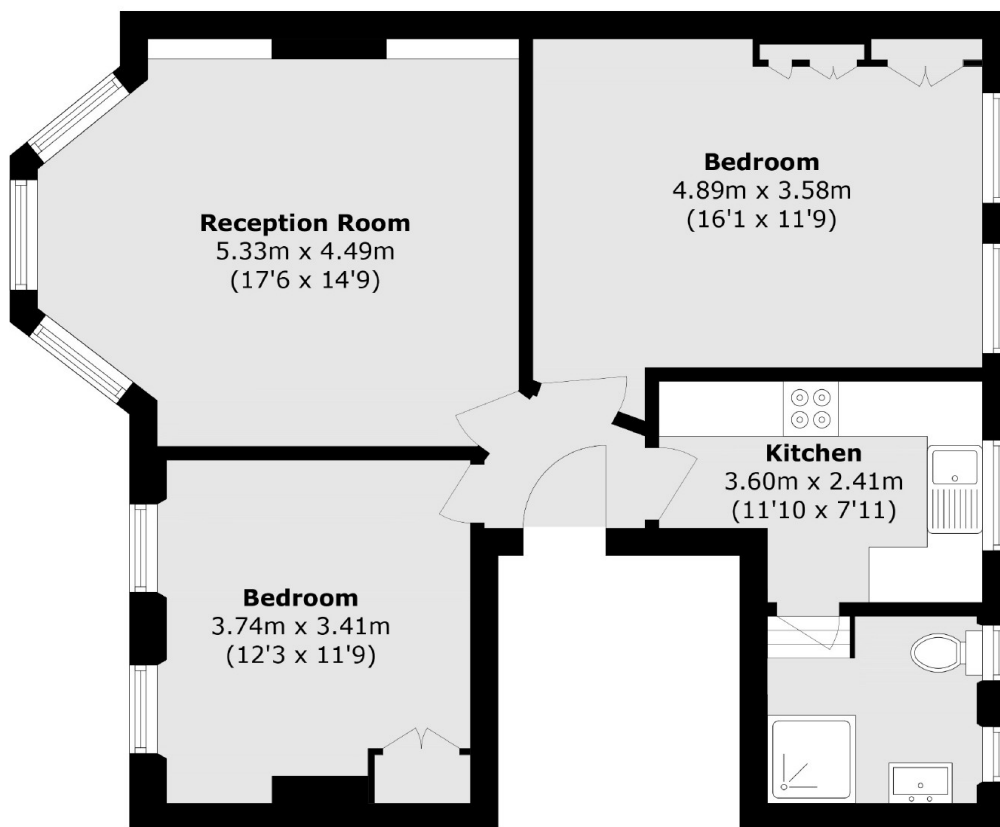
This well-maintained first-floor flat, set within a charming period conversion, is offered in excellent condition. The south-facing reception room features a beautiful bay window, filling the space with natural light. Both bedrooms are generously sized doubles, and the property features high ceilings throughout, enhancing its bright and airy feel.

Brondesbury Villas offers convenient access to Queen's Park, where you'll find an array of shops, cafés, and restaurants. Excellent transport links include Queen's Park Station (Bakerloo & Lioness lines) and multiple bus routes providing easy connections to the City.

### Features

- Two Bedrooms
- First Floor Flat
- Separate Kitchen
- High Ceilings
- Great Condition
- Queen's Park

# Brondesbury Villas, London, NW6



Total area (approx.): 68.4 sq. m (736.2 sq. ft)