



Brondesbury Park, NW2

£519 Per week

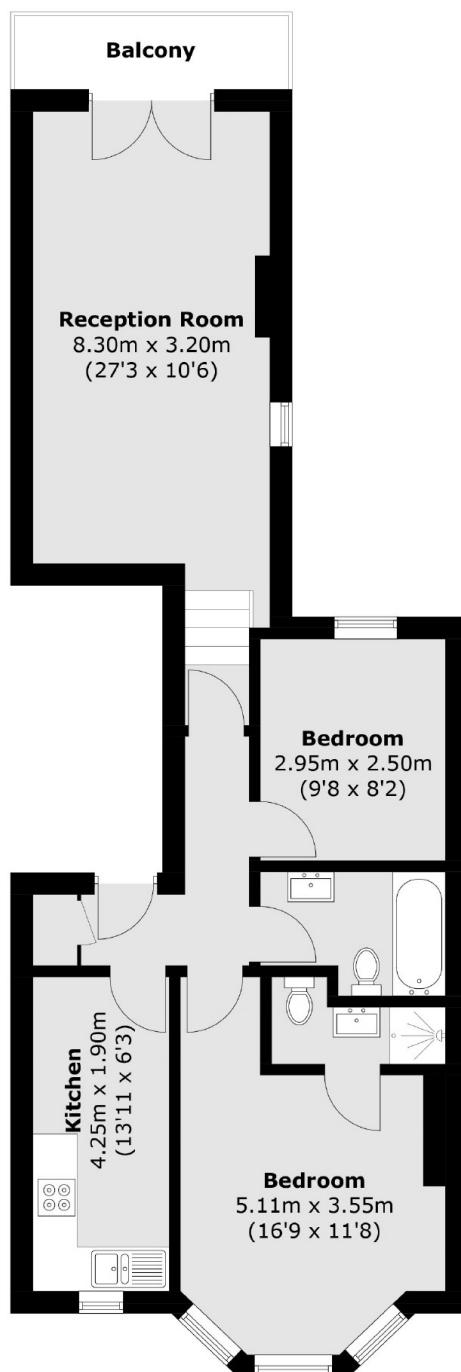
A very well presented two double bedroom two bathroom apartment set on the first floor of an impressive period conversion. You will find a generous reception that leads onto the balcony with a modern separate kitchen.

Brondesbury Park is a tree-lined residential street with access to the shops, cafes, bars and restaurants in Willesden Green and Queen's Park. Transport links include Willesden Green (Jubilee) and Brondesbury Park (Overground), and multiple bus routes.

Features

- Two Double Bedrooms
- Balcony
- Good Condition Throughout
- Wooden Floors
- Close To Local Amenities
- Close To Transport Links

Brondesbury Park, London, NW2



Total area (approx.): 65.0 sq. m (699.7 sq. ft)
Balcony: 3.7 sq. m (39.8 sq. ft)