



Burns Road, NW10

£392 Per week

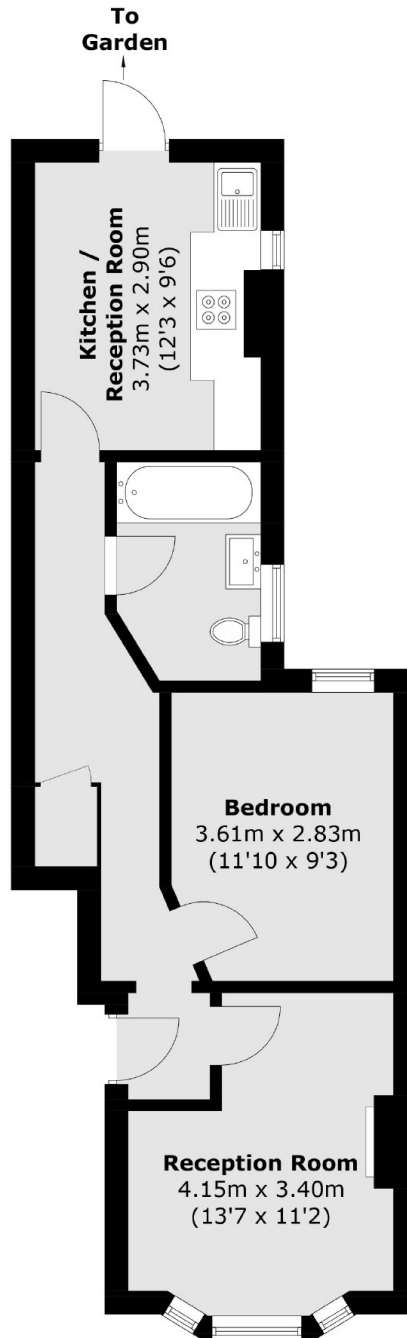
An extremely well presented one bedroom apartment with direct access to a landscaped private garden. There is a spacious reception and a modern eat in kitchen with wooden floors throughout.

Burns Road is a residential street located near the local amenities of Harlesden and Willesden. The nearest stations are Harlesden and Willesden Junction.

Features

- One Bedroom
- Private Garden
- Wooden Floors
- Dine In Kitchen
- Ground Floor
- Modern

Burns Road, London, NW10



Total area (approx.): 49.9 sq. m (537.1 sq. ft)