



Brondesbury Park, NW6

£1,100,000

Dexters



Brondesbury Park, NW6

Located in the highly sought-after Brondesbury Park, this spacious three-bedroom, top-floor split-level flat covers over 1,800 sq ft. The property features a bright and modern open-plan kitchen and reception area, with access to a communal garden.

There is a generous open-plan kitchen and reception area, bathed in natural light and ideal for both relaxing and entertaining. A spiral staircase leads to a versatile mezzanine level perfect as a home office, reading nook, or cosy snug.

The main bedroom is a generous size and comes with its own en suite bathroom and a dressing area. The second bedroom also has a dressing area and uses the main family bathroom. The third bedroom is a good size and can be used as a guest room, nursery, or study.

Residents can also enjoy access to well-kept communal gardens a lovely spot to relax outside.

Brondesbury Park is a tree-lined residential street with access to the shops, cafes, bars and restaurants in Willesden Green and Queen's Park. Transport links include Willesden Green (Jubilee) and Brondesbury Park (Overground), and multiple bus routes giving easy access to The City.

Features

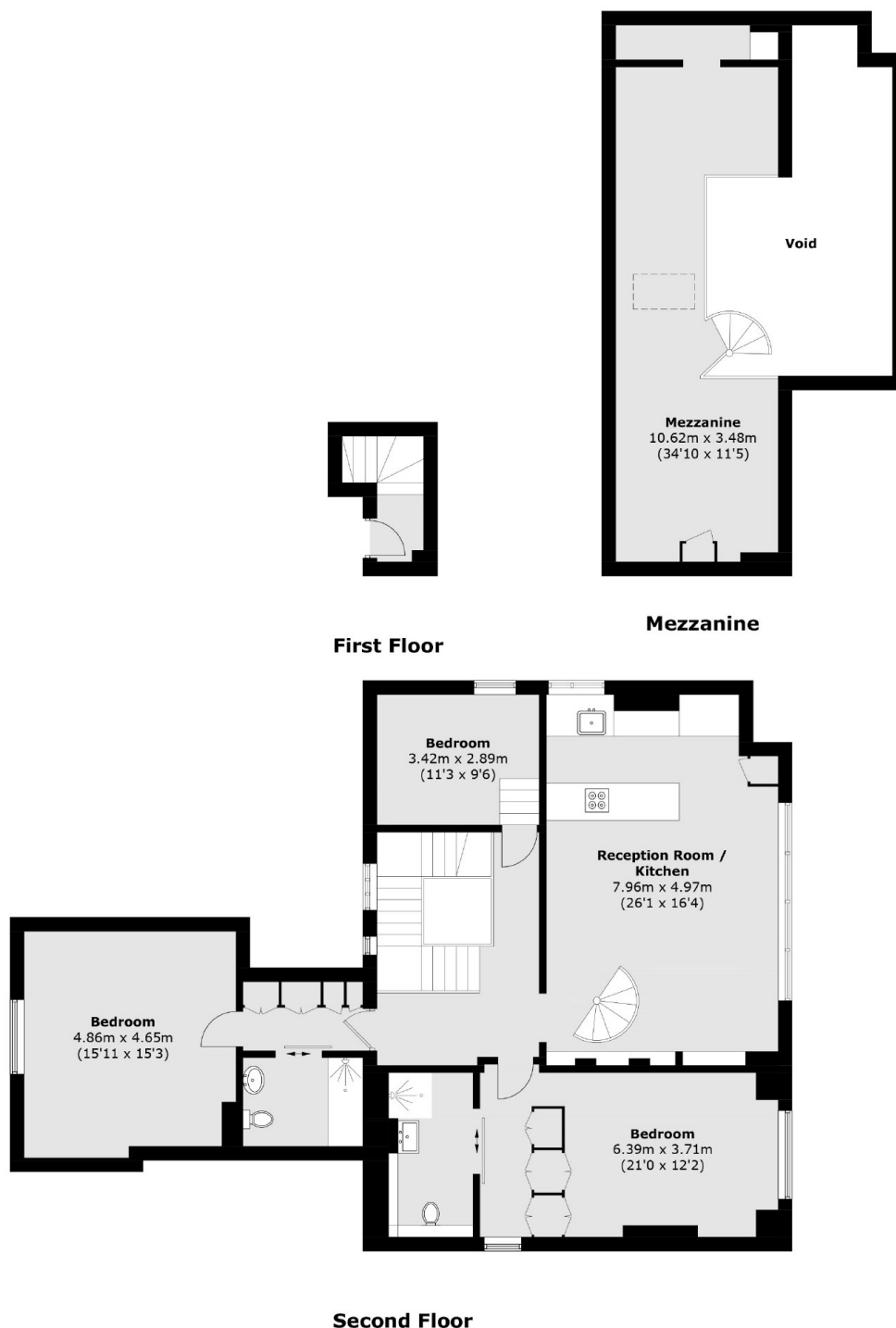
- Two Bedrooms
- Two Bathrooms
- Communal Garden
- Top Floor Flat
- Great Condition
- Close to Transport







Brondesbury Park, London, NW6



Total area (approx.): 169.2 sq. m (1821.1 sq. ft)
(Including Mezzanine / Excluding Void)

Dexters

Kensal Rise & Queen's Park
62 Chamberlayne Road
London
NW10 3JJ
Sales
020 8600 3100

Energy Rating: . We aim to make our particulars both accurate and reliable. However they are not guaranteed; nor do they form part of an offer or contract. If you require clarification on any points then please contact us, especially if you're traveling some distance to view. Please note that appliances and heating systems have not been tested and therefore no warranties can be given as to their good working order.

 **RICS** | Regulated
Estate Agent
and Letting Agent

dexters.co.uk