



Banister Road, W10

£473 Per week

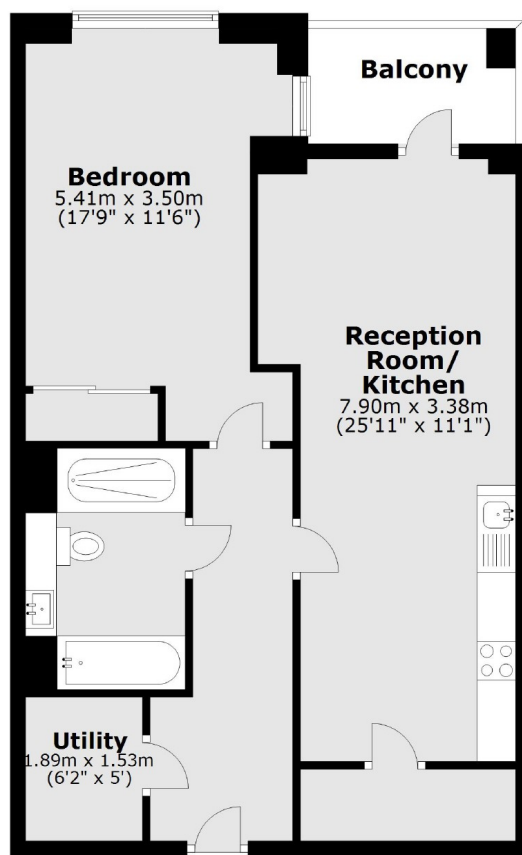
A spacious one bedroom flat in a new build block, with access to a communal roof garden. The property has lift access and a private balcony. Layout also includes a modern kitchen, wooden floors and built-in storage.

Prime House is ideally located close to the shops, cafes, restaurants and bars in Kensal Rise and Queen's Park. Transport links include Kensal Rise, Kensal Green and Queen's Park.

Features

- One Bedroom
- Modern
- Private Balcony
- Communal Roof Garden
- Lift
- Close To Transport

Banister Road, London, W10



Main area: Approx. 63.4 sq. metres (682.1 sq. feet)
Plus balconies, approx. 4.5 sq. metres (48.9 sq. feet)

Dexters

Kensal Rise & Queen's Park
62 Chamberlayne Road
London
NW10 3JJ
Lettings
020 8600 3101

Energy Rating: B. We aim to make our particulars both accurate and reliable. However they are not guaranteed; nor do they form part of an offer or contract. If you require clarification on any points then please contact us, especially if you're traveling some distance to view. Please note that appliances and heating systems have not been tested and therefore no warranties can be given as to their good working order.

 **RICS** | Regulated
Estate Agent
and Letting Agent

dexters.co.uk