

## Wakeman Road, NW10

### £675,000

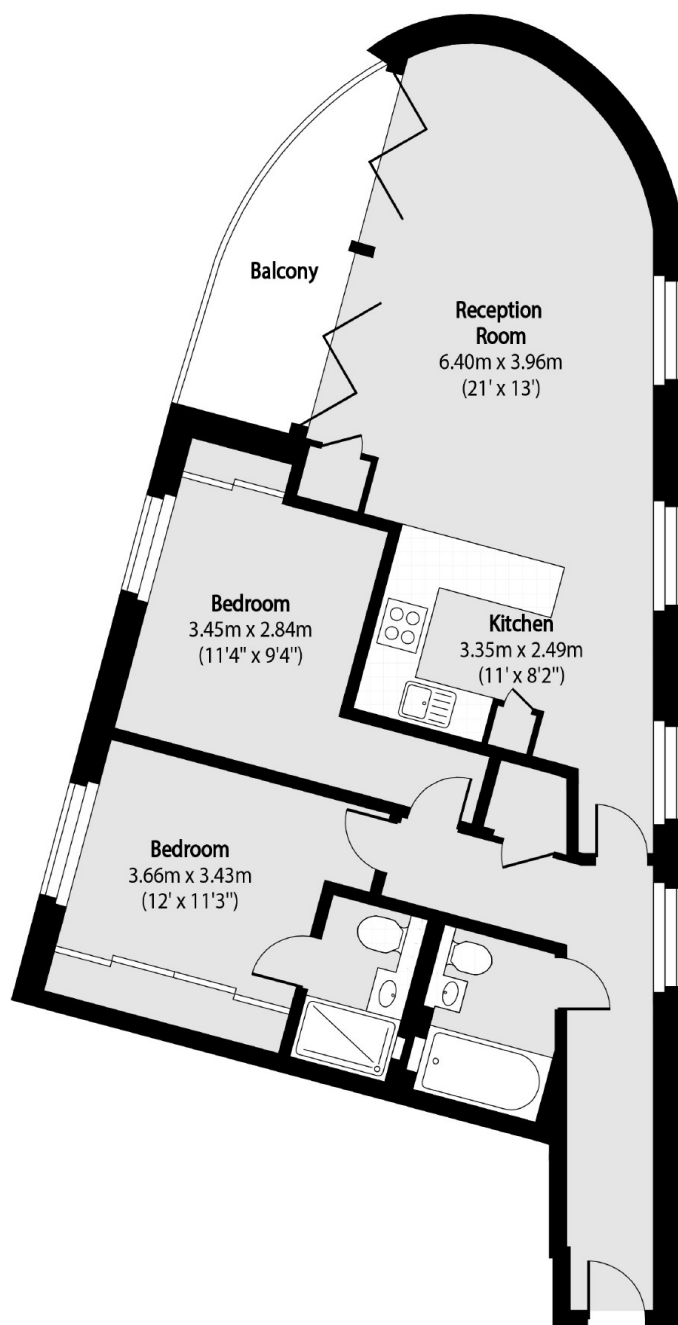
Set within a secure modern purpose built block is this two double bedroom second floor flat with a south facing reception room and balcony. The property has an open plan kitchen and reception room, two bathrooms, a utility cupboard, underground gated parking, and is available chain-free.

Rhapsody Court is located close to the cafes, shops, restaurants and bars on Chamberlayne Road, and in close proximity to Queen's Park and Notting Hill. Transport links include Kensal Green (Overground & Bakerloo) and Kensal Rise (Overground), and multiple bus routes.

### Features

- Two Double Bedrooms
- Two Bathrooms
- Balcony
- Gated Off-Street Parking
- Share Of Freehold
- Chain-Free

# Wakeman Road, London, NW10



Total area (approx): 80.73 sq m (869 sq. ft)

Balcony total area (approx): 5.85 sq m (63 sq. ft)

## Dexters

Kensal Rise & Queen's Park  
62 Chamberlayne Road  
London  
NW10 3JJ

Sales  
020 8600 3100

Energy Rating: B. We aim to make our particulars both accurate and reliable. However they are not guaranteed; nor do they form part of an offer or contract. If you require clarification on any points then please contact us, especially if you're traveling some distance to view. Please note that appliances and heating systems have not been tested and therefore no warranties can be given as to their good working order.

 **RICS** | Regulated  
Estate Agent  
and Letting Agent

[dexters.co.uk](https://www.dexters.co.uk)