



Furness Road, NW10

£634 Per week

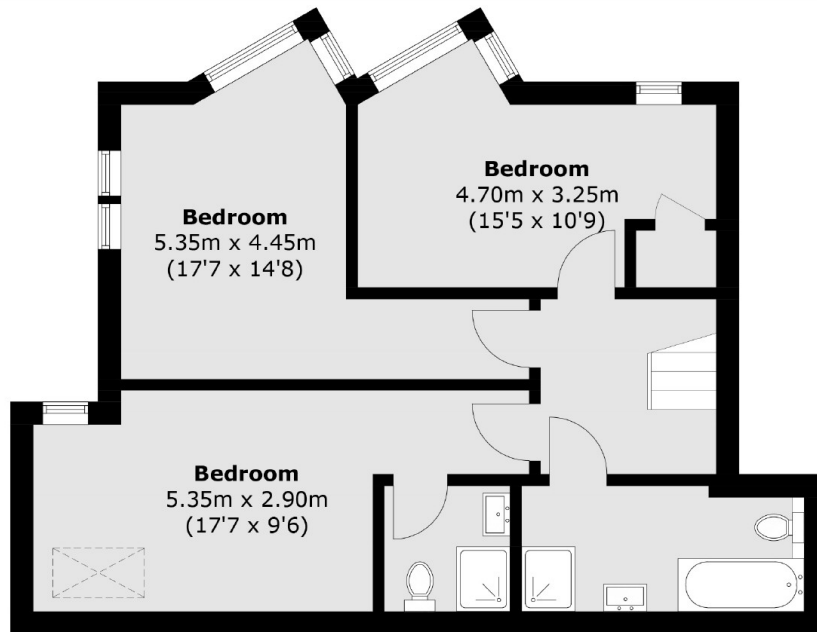
A modern three double bedroom flat arranged over two floors. The property has wooden floors, a spacious open plan living room and kitchen, a utility room and two modern bathrooms, one of which is en-suite.

Furness Road is within walking distance of Willesden Junction Station and is close to many local cafés, shops, schools and transport links.

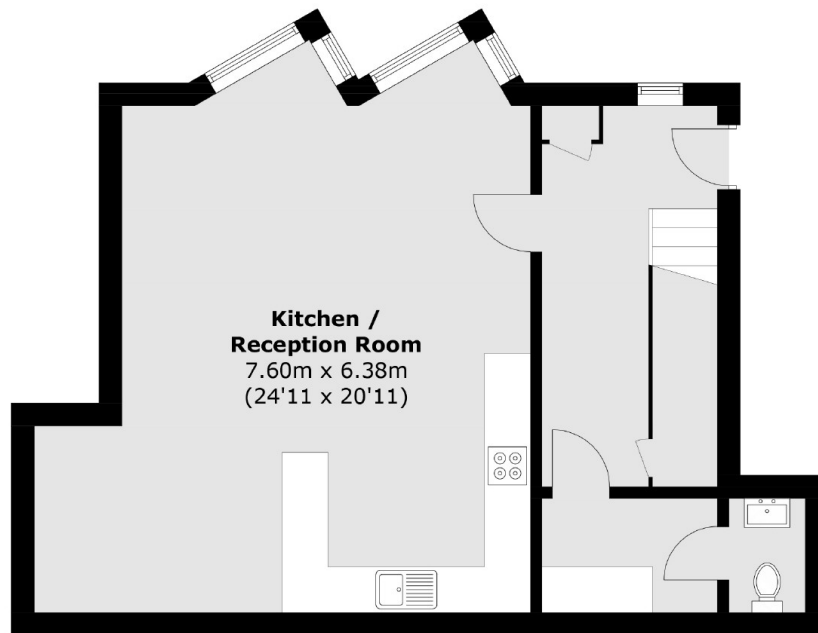
Features

Newly Refurbished
Three Bedrooms
Two Bathrooms
Open Plan Living
Utility Room
Spilt Level

Furness Road,
London, NW10



First Floor



Ground Floor

Total area (approx.): 116.4 sq. m (1,252.9 sq. ft)