



Glengall Road, NW6

£485,000

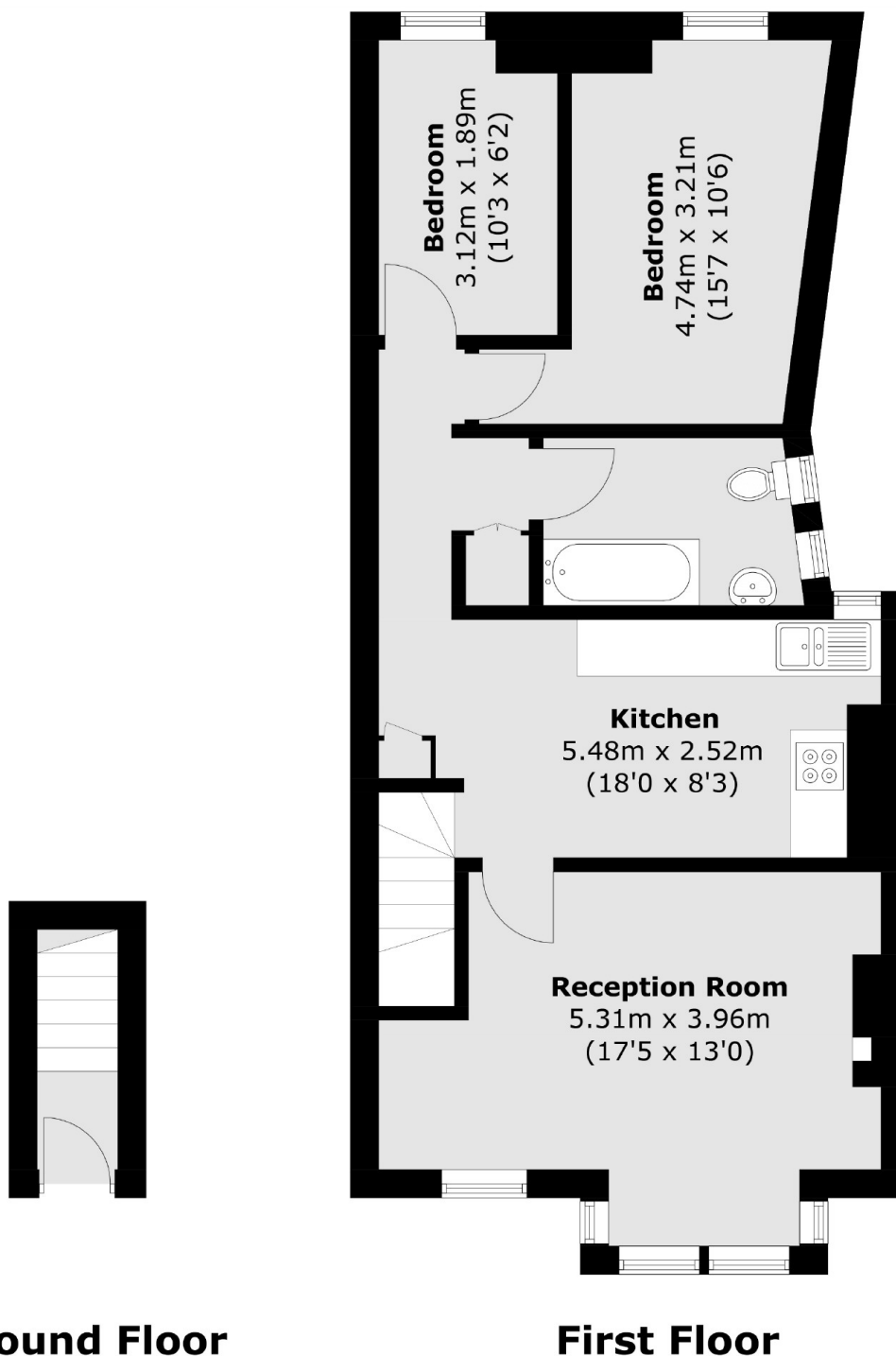
A light and spacious two bedroom first floor flat with its own entrance. The property has a reception room to the front of the building, a separate eat-in kitchen, with the bedrooms to the rear, has a share in the freehold, has the potential to be extended, and is available chain-free.

Glengall Road is located on a tree-lined street close to the shops, cafes, and amenities on Salusbury Road, the High Road, with West Hampstead and the green open spaces of Queen's Park close by. Transport links include Queen's Park (Barkerloo & Overground), Kilburn (Jubilee), and Kilburn High Road (Overground).

Features

- Two Bedrooms
- First Floor Flat
- Own Entrance
- Potential To Extend
- Share Of Freehold
- Chain-Free

Glengall Road, London, NW6



Total area (approx.): 61.1 sq. m (657.6 sq. ft)

Dexters

Kensal Rise & Queen's Park
62 Chamberlayne Road
London
NW10 3JJ
Sales
020 8600 3100

Energy Rating: D. We aim to make our particulars both accurate and reliable. However they are not guaranteed; nor do they form part of an offer or contract. If you require clarification on any points then please contact us, especially if you're traveling some distance to view. Please note that appliances and heating systems have not been tested and therefore no warranties can be given as to their good working order.

 **RICS** | Regulated
Estate Agent
and Letting Agent

dexters.co.uk