



## Brondesbury Road, NW6

### £530,000

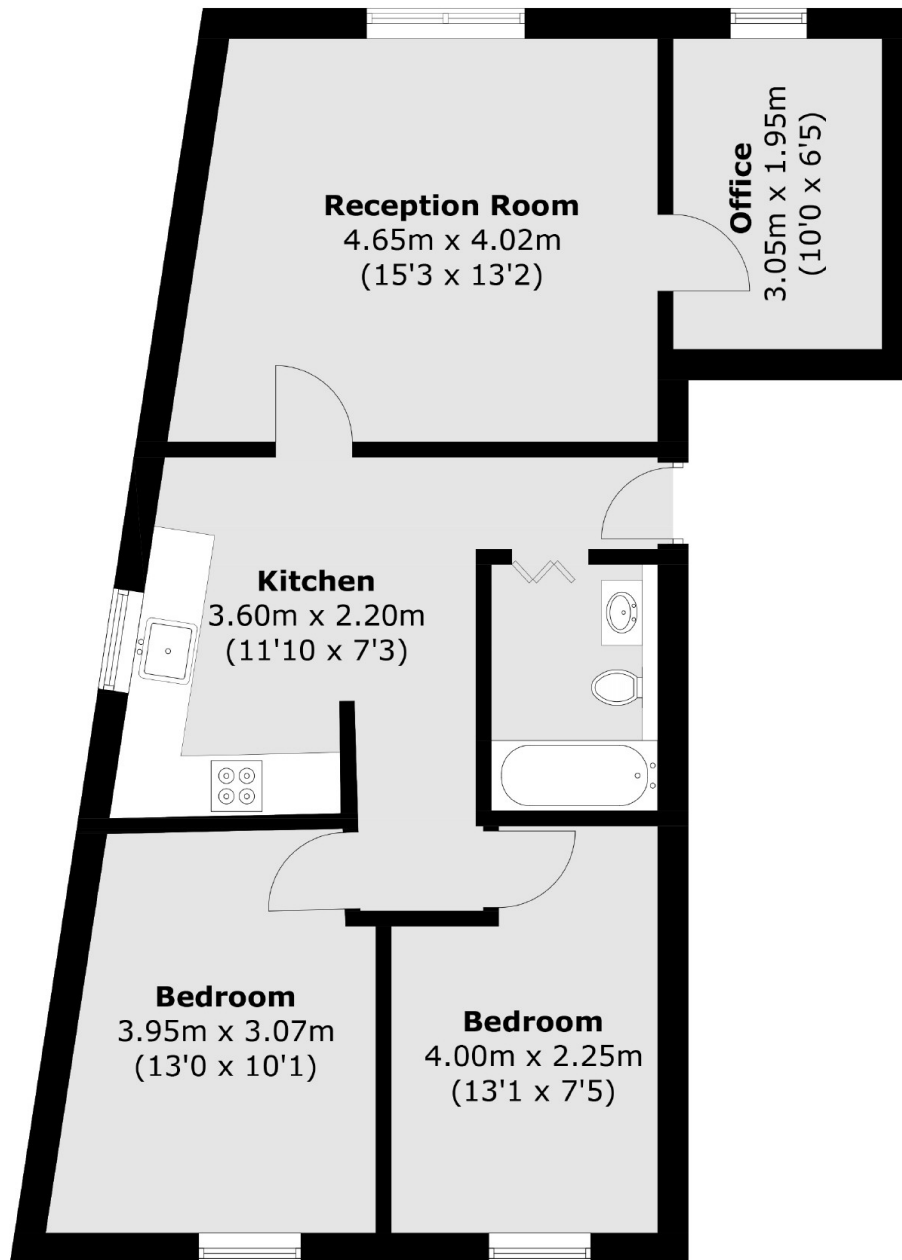
Situated on the first floor of a charming period conversion in the heart of Queen's Park, this two-bedroom flat boasts an abundance of natural light. It features a separate reception room with access to a dedicated office space, a well-appointed kitchen, and a bathroom with a bathtub.

Brondesbury Road is ideally located just minutes from Queen's Park Station (Bakerloo Line & Overground) and the vibrant amenities of the ever-popular Salusbury Road with plenty of cafes, bar and restaurants to choose from.

### Features

- Two Bedrooms
- First Floor Flat
- Share of Freehold
- Chain Free
- Close to Transport
- Period Conversion

# Brondesbury Road, London, NW6



Total area (approx.): 66.6 sq. m (716.9 sq. ft)

## Dexters

Kensal Rise & Queen's Park  
62 Chamberlayne Road  
London  
NW10 3JJ  
Sales  
020 8600 3100

Energy Rating: D. We aim to make our particulars both accurate and reliable. However they are not guaranteed; nor do they form part of an offer or contract. If you require clarification on any points then please contact us, especially if you're traveling some distance to view. Please note that appliances and heating systems have not been tested and therefore no warranties can be given as to their good working order.

 **RICS** | Regulated  
Estate Agent  
and Letting Agent

[dexters.co.uk](https://www.dexters.co.uk)