



## Salisbury Road, NW6

### £900,000

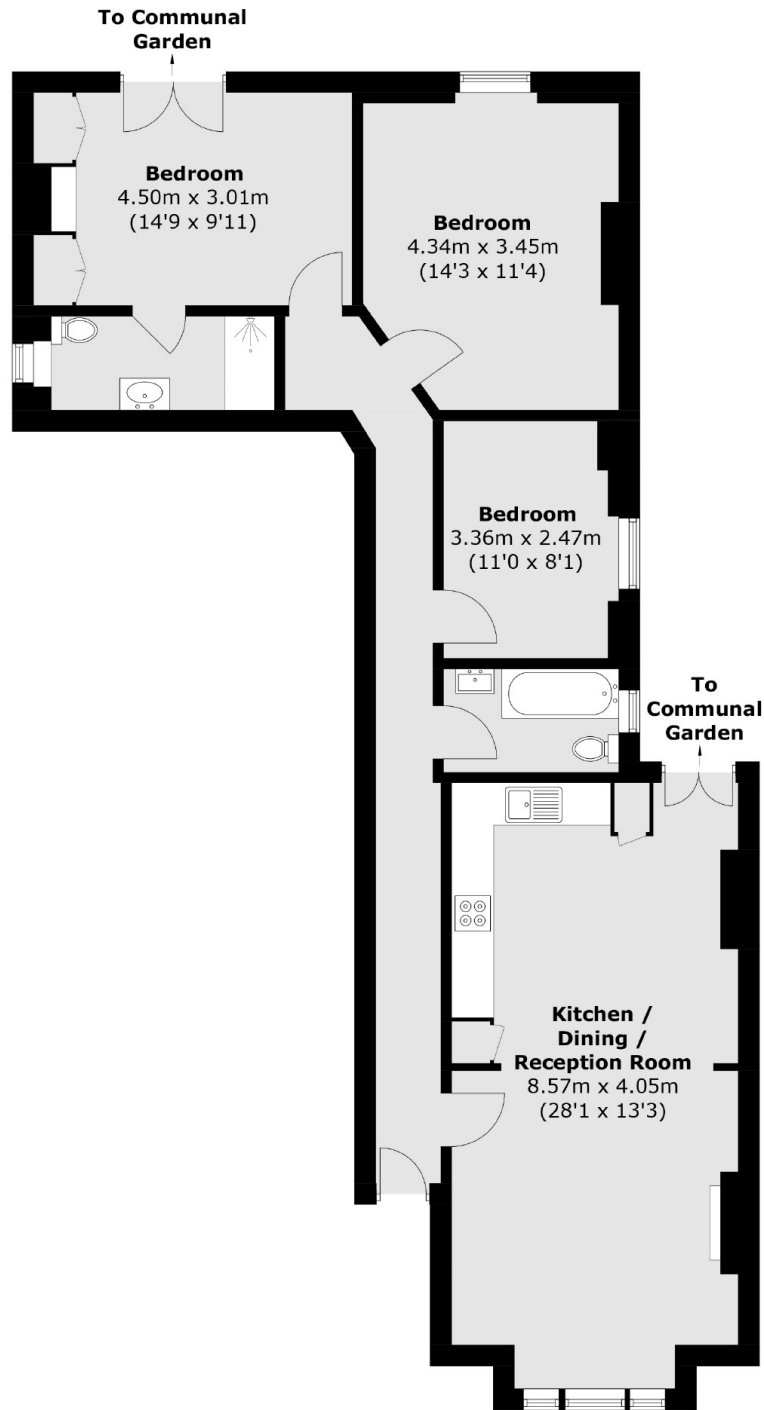
Set within a period mansion block is this three bedroom garden floor flat. The property has an east-facing open plan kitchen and reception to the front of the building, with direct access to the communal garden to the rear, is available chain-free, and situated in a prime location.

Salisbury Road is in the heart of Queen's Park, hosting shops, cafes, restaurants and bars. It provides access to a number of transport links, including Brondesbury Park (Overground) and Queen's Park (Barkerloo), and bus routes.

### Features

- Three Bedrooms
- Ground Floor Flat
- Open Plan Kitchen & Reception
- Communal Garden
- Chain-Free
- Close To Local Amenities

# Salisbury Road, London, NW6



Total area (approx.): 95.4 sq. m (1,026.9 sq. ft)

## Dexters

Kensal Rise & Queen's Park  
62 Chamberlayne Road  
London  
NW10 3JJ

Sales  
020 8600 3100

Energy Rating: D. We aim to make our particulars both accurate and reliable. However they are not guaranteed; nor do they form part of an offer or contract. If you require clarification on any points then please contact us, especially if you're traveling some distance to view. Please note that appliances and heating systems have not been tested and therefore no warranties can be given as to their good working order.

 **RICS** | Regulated  
Estate Agent  
and Letting Agent

[dexters.co.uk](https://www.dexters.co.uk)