

## Salisbury Road, NW6

£850,000

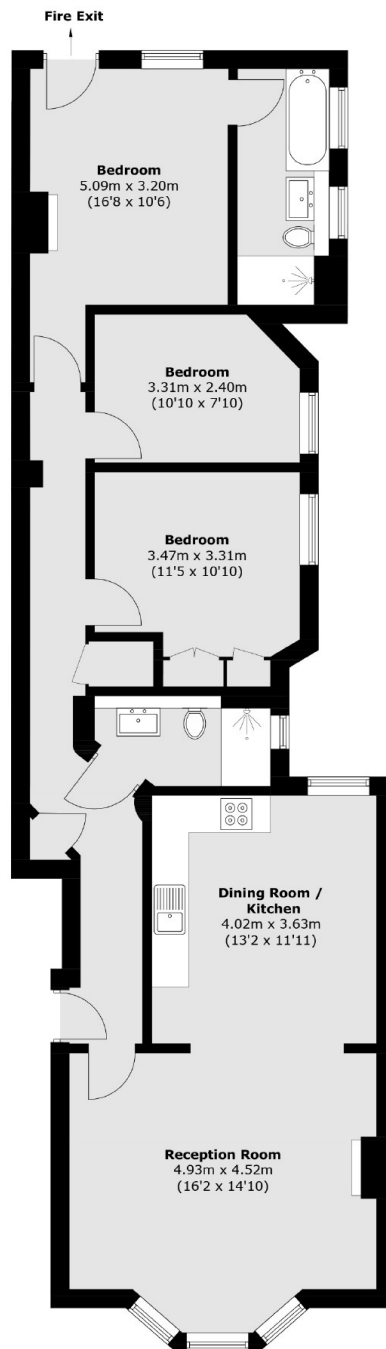
Set within a period mansion block is this three bedroom first floor flat. The property has an east-facing open plan kitchen and reception to the front of the building, with a communal garden to the rear, is available chain-free, and situated in a prime location.

Salisbury Road is in the heart of Queen's Park, hosting shops, cafes, restaurants and bars. It provides access to a number of transport links, including Brondesbury Park (Overground) and Queen's Park (Barkerloo), and bus routes.

### Features

- Three Bedrooms
- First Floor Flat
- Open Plan Kitchen & Reception
- Communal Garden
- Chain-Free
- Close To Local Amenities

# Salisbury Road, London, NW6



Total area (approx.): 92.9 sq. m (1,000 sq. ft)