



The Avenue, NW6

£796 Per week

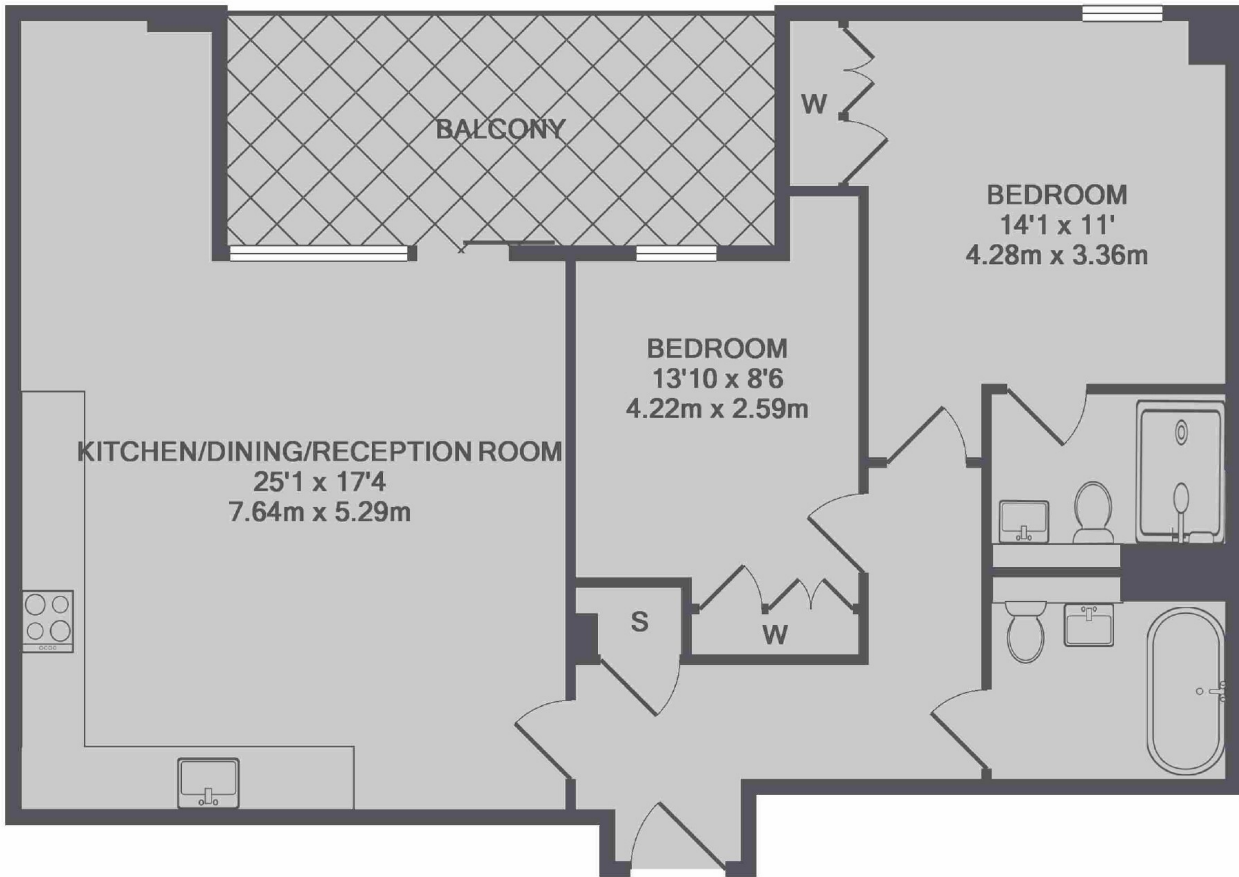
A two bedroom new build apartment on the second floor. The property has two bathrooms, an open plan reception, a private balcony and wooden flooring throughout. The property also comes with parking and access to a gym.

The Avenue is a sought-after residential road and within walking distance to Salusbury Road and Brondesbury Park Station.

Features

- Parking
- Two Bedrooms
- Two Bathrooms
- Gym
- Wood Flooring
- Great Location

The Avenue, London, NW6



TOTAL APPROX. FLOOR AREA 814 SQ.FT. (75.6 SQ.M.)