



Brondesbury Park, NW6

£675,000

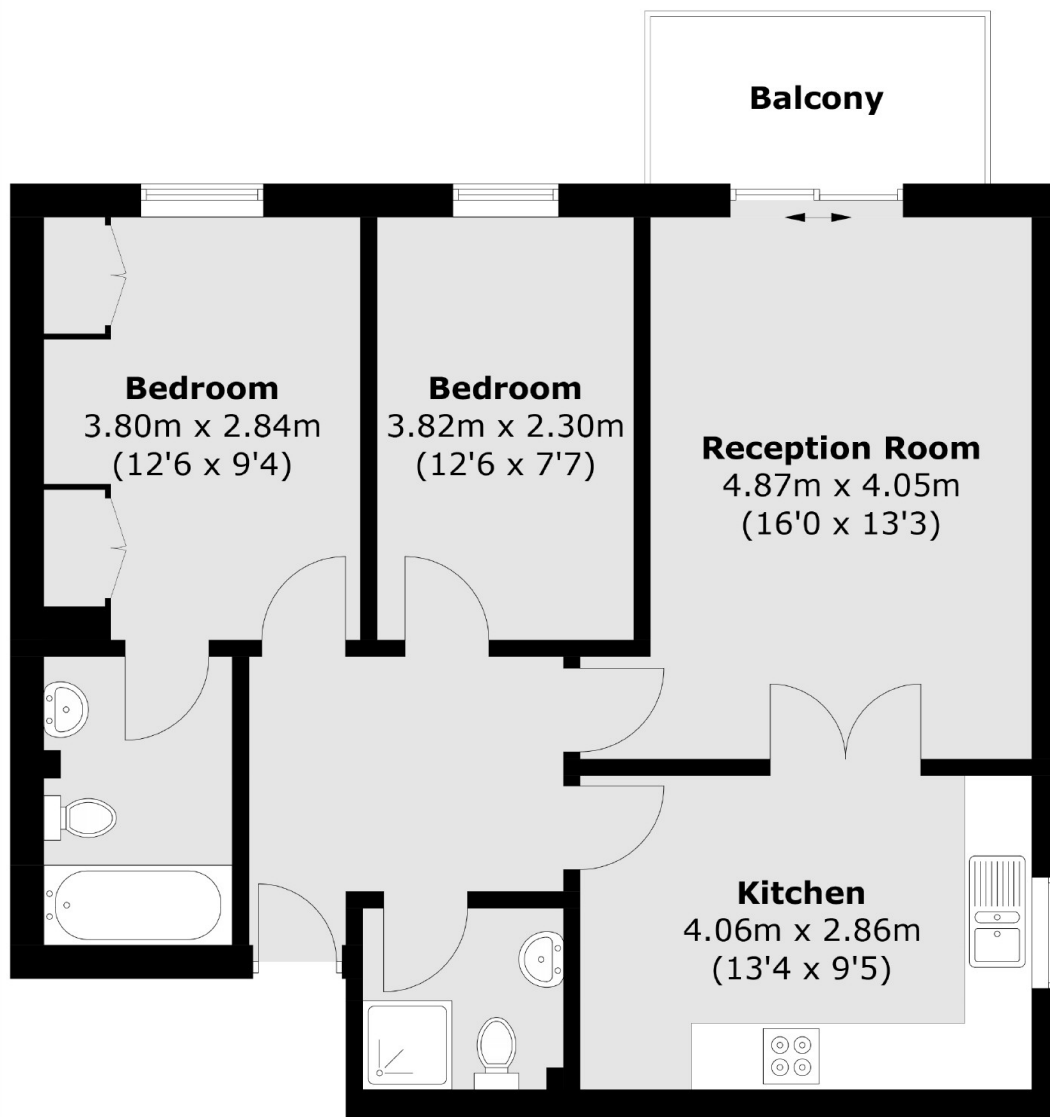
Set within an attractive secure purpose built development is this two bedroom first floor flat with lift access. The property has a separate eat-in kitchen, reception room with access to a balcony, built-in storage, and is available chain-free.

Brondesbury Park is a tree-lined residential street with access to the shops, cafes, bars and restaurants in Willesden Green and Queen's Park. Transport links include Willesden Green (Jubilee) and Brondesbury Park (Overground), and multiple bus routes.

Features

- Two Bedrooms
- Two Bathrooms
- Separate Eat-In Kitchen
- Balcony & Communal Garden
- Allocated Off-Street Parking
- Chain-Free

Brondesbury Park, London, NW6



Total area (approx.): 66.1 sq. m (711.5 sq. ft)
Balcony area: 4.5 sq. m (48.4 sq. ft)