



## Kilburn Lane, W10

### £490,000

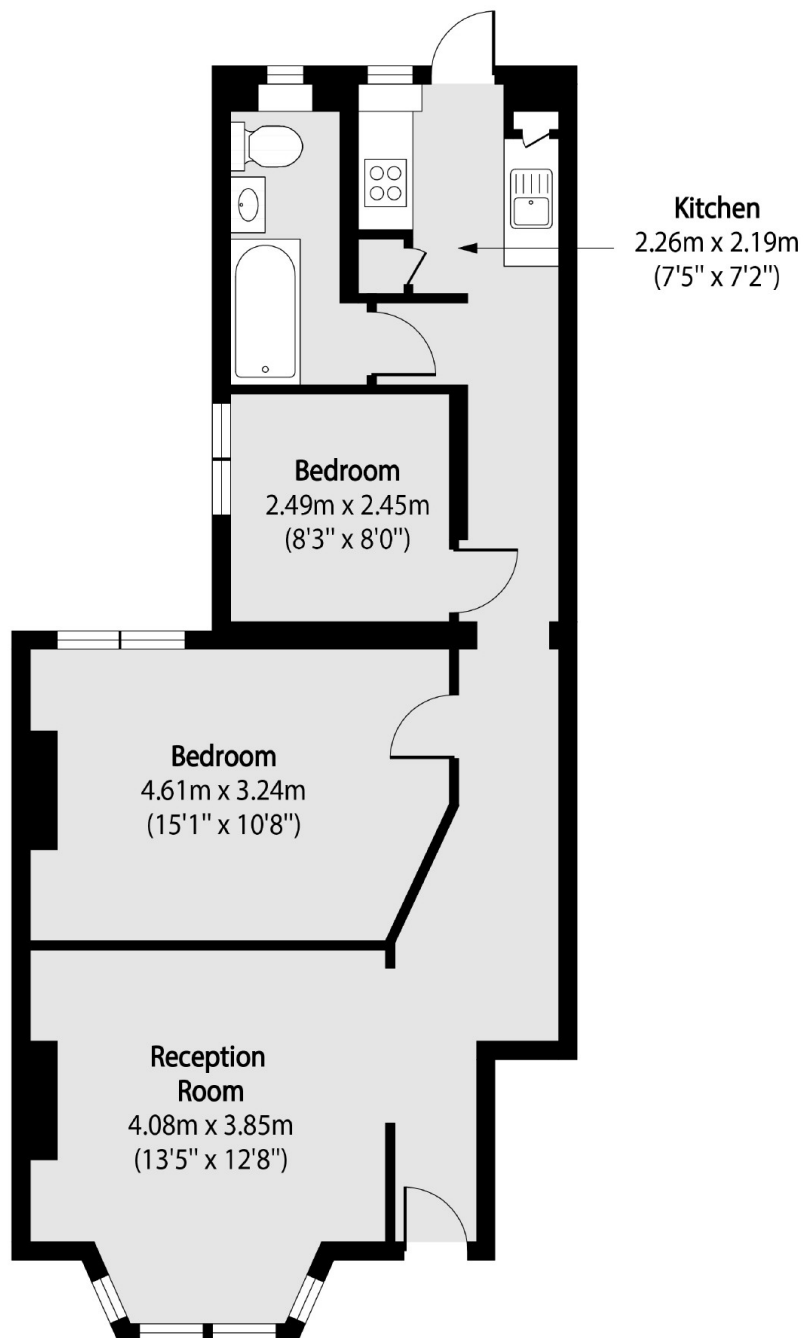
A beautifully presented two bedroom ground floor garden flat, in the heart of Kensal Rise. The property benefits from having a south facing reception room to the front, high ceilings, a separate fully integrated kitchen, in good condition throughout, and in close proximity to local amenities.

Kilburn Lane is close to the shops, cafes, restaurants and bars on Chamberlayne Road and Salusbury Road, with Ladbrooke Grove nearby. Transport links include Kensal Green (Bakerloo & Overground), Kensal Rise (Overground), and Queen's Park (Bakerloo & Overground).

### Features

- Two Bedrooms
- Shared Garden Flat
- Separate Kitchen
- South Facing Reception
- Close To Local Amenities
- Close To Transport Links

# Kilburn Lane, London, W10



Total area (approx): 59.71 sq m (642 sq. ft)