



Brondesbury Park, NW6

£450,000

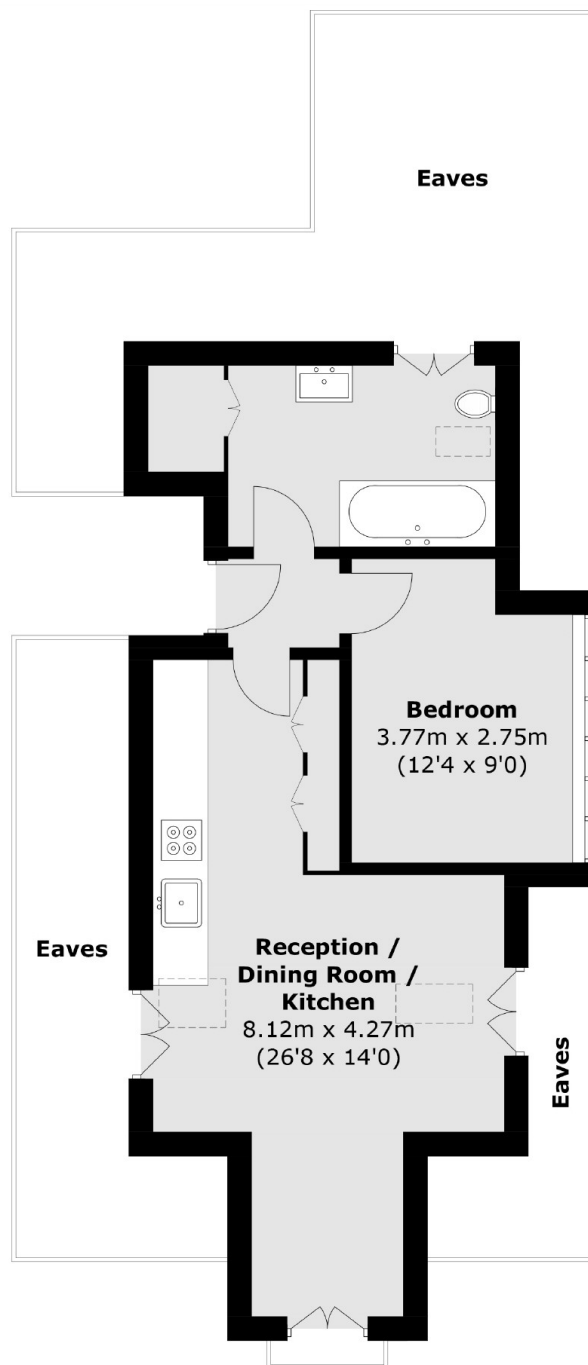
A newly developed one bedroom flat set on the second floor of a converted semi detached house. The property has an open plan kitchen and reception room flooded with natural light, a modern fully integrated kitchen, built-in and under the eaves storage, is chain-free, and has access to a communal garden.

Brondesbury Park is a tree-lined residential street with access to the shops, cafes, bars and restaurants in Willesden Green and Queen's Park. Transport links include Willesden Green (Jubilee) and Brondesbury Park (Overground), and multiple bus routes.

Features

- One Bedroom
- Second Floor Flat
- One Bathroom & Storage
- Open Plan Kitchen & Reception
- Communal Garden
- Chain-Free

Brondesbury Park, London, NW6



Total area (approx.): 46.6 sq. m (501.6 sq. ft)
(Excluding Eaves)

Dexters

Kensal Rise & Queen's Park
62 Chamberlayne Road
London
NW10 3JJ

Sales
020 8600 3100

Energy Rating: B. We aim to make our particulars both accurate and reliable. However they are not guaranteed; nor do they form part of an offer or contract. If you require clarification on any points then please contact us, especially if you're traveling some distance to view. Please note that appliances and heating systems have not been tested and therefore no warranties can be given as to their good working order.

 **RICS** | Regulated
Estate Agent
and Letting Agent

[dexters.co.uk](https://www.dexters.co.uk)