



## Glengall Road, NW6

### £550,000

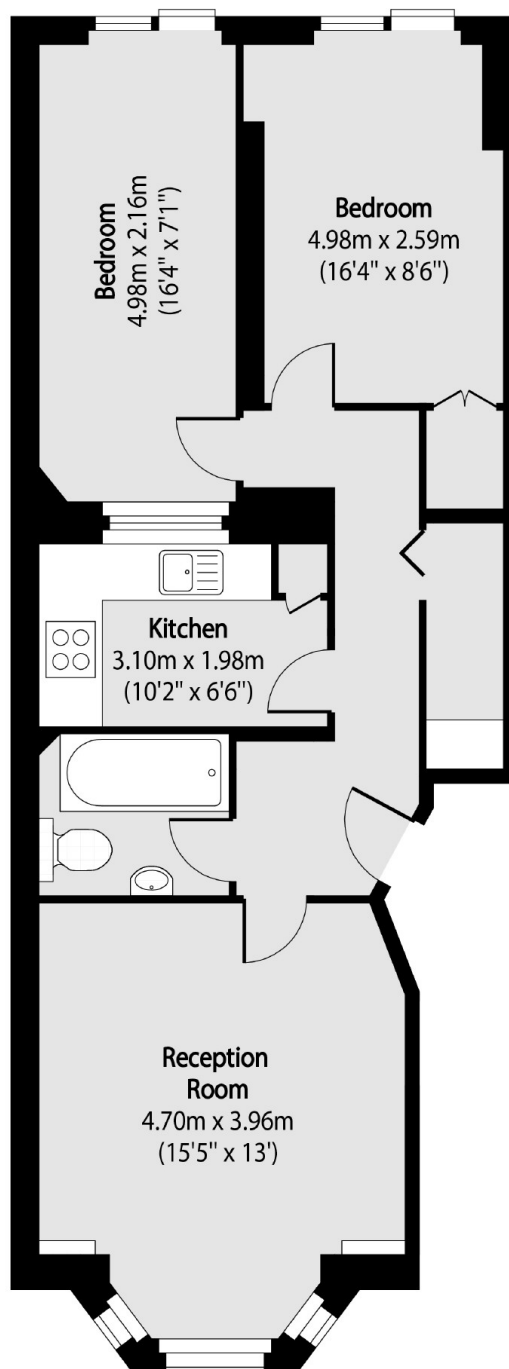
This two-bedroom ground-floor flat features a bright front reception room with a bay window, a modern three-piece bathroom, and a separate kitchen. The south-facing private garden is thoughtfully designed for low-maintenance enjoyment.

Glengall Road is a residential street located a short distance from the vibrant shops, cafes, and essential amenities of Queen's Park. Nearby Stations include Kilburn High Road (0.3miles), Brondesbury (0.5miles) and Queen's Park and Kilburn (0.6miles) offering Overground, Bakerloo and Jubilee Lines.

### Features

- Two Bedrooms
- Ground Floor
- South-Facing Garden
- Close to Amenities
- Leasehold
- Chain Free

# Glengall Road, London, NW6



Total area (approx): 62.24 sq m (670 sq. ft)