



## Sycamore Walk, W10

£375,000

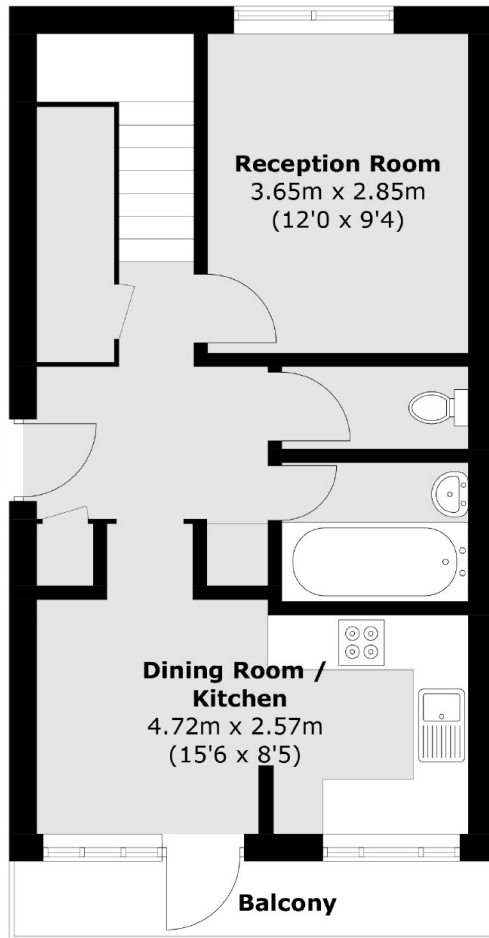
A spacious two double bedroom flat in a securely gated purpose built development, with a private balcony. The property benefits from having a separate kitchen, a south facing living room with access to the balcony, built-in storage, and is available chain-free.

Sycamore Walk is located off Fifth Avenue which is a residential tree-lined street with access to the shops, cafés, restaurants and bars in Kensal Rise and Notting Hill, and in close proximity to Queen's Park and Maida Vale. Transport links include Kensal Green (Bakerloo & Overground) and Westbourne Park (Circle, Hammersmith & City).

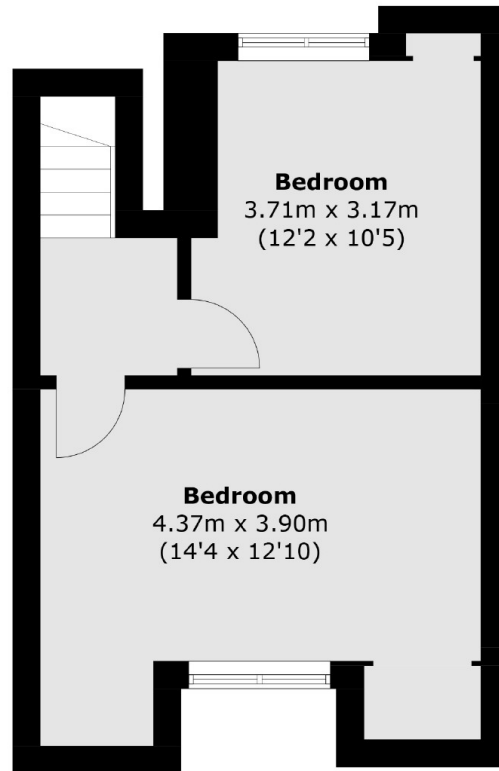
### Features

- Two Double Bedrooms
- Split-Level
- Separate Kitchen
- Balcony
- Chain-Free
- Close To Local Amenities

# Sycamore Walk, London, W10



**Ground Floor**



**First Floor**

Total area (approx.): 73.2 sq. m (787.9 sq. ft)  
Balcony: 4.3 sq. m (46.3 sq. ft)