



## Winchester Avenue, NW6

£350,000

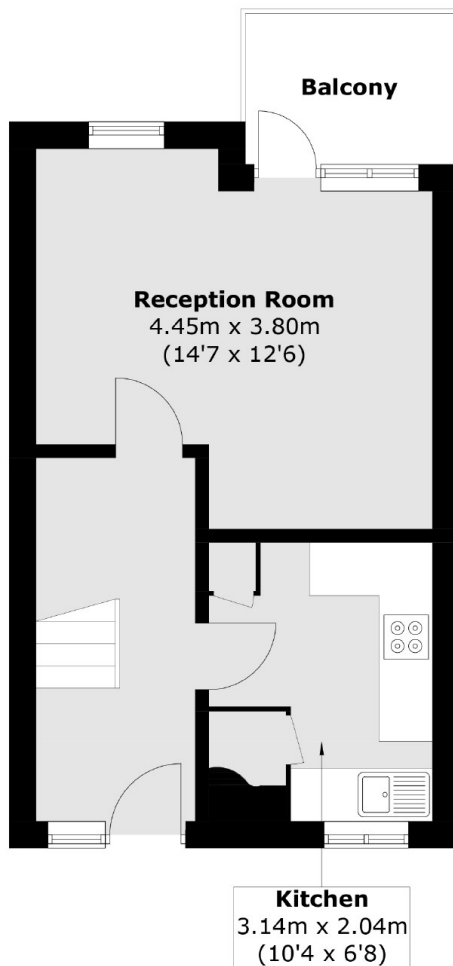
A spacious two double bedroom flat configured over two floors in a secure purpose built development. The property has a south facing reception room with a balcony, a separate kitchen, off-street parking available via permit, and is available chain-free.

Mapes House is located on Winchester Avenue in Queen's Park, with access to the shops, cafes, restaurants and bars on Salusbury Road. Transport links include Brondesbury Park (Overground), Queen's Park (Bakerloo & Overground) and Kilburn (Jubilee).

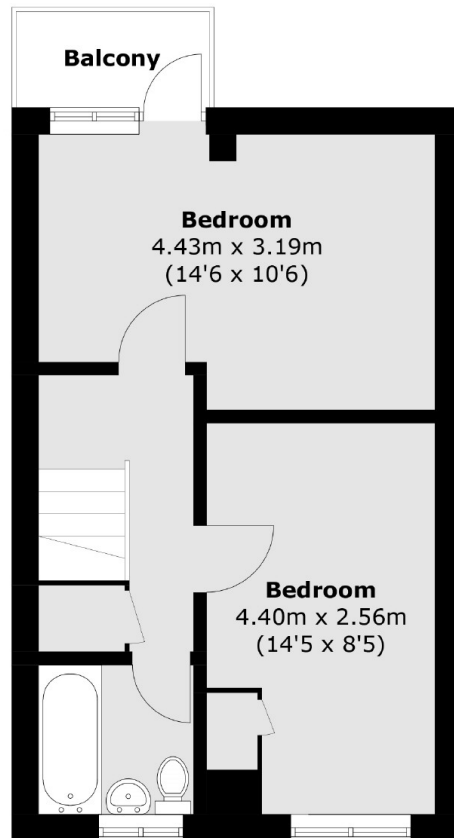
### Features

- Two Double Bedrooms
- South facing Reception Room
- Split-Level
- Two Balconies
- Chain-Free
- Close To Local Amenities

# Winchester Avenue, London, NW6



**First Floor**



**Second Floor**

Total area (approx.): 66.9.x sq. m (720.0 sq. ft)  
Balcony: 6.3 sq. m (67.8 sq. ft)