



Salisbury Road, NW6

£1,250,000

Queen's Park Penthouses is a luxurious boutique rooftop development situated above a charming brick Art Deco building on Salisbury Road. This exclusive collection of penthouses redefines modern living, showcasing expansive terraces and breathtaking panoramic views of London. Residents enjoy exceptional amenities, including a concierge service and secure covered parking.

Located just moments from Queen's Park Station (Bakerloo and Overground) and the vibrant high street offering an array of shops, bars, and restaurants, this penthouse offers the ultimate urban lifestyle.

Features

- Three Bedrooms
- Two Bathrooms
- Lift Access
- Concierge
- Private Covered Parking
- Chain Free



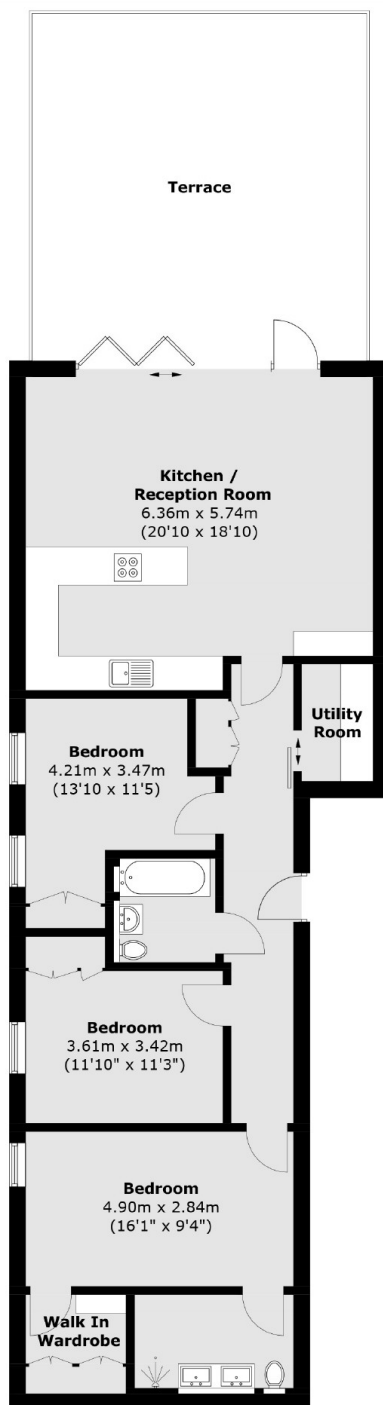
Salisbury Road, NW6

As you enter you will discover an expansive open-plan living area and kitchen equipped with high-end integrated appliances. Bi-folding doors seamlessly connect this space to a large roof terrace, creating an ideal setting for entertaining guests or enjoying peaceful evenings under the stars.

The penthouse includes three spacious double bedrooms, each with built-in storage solutions, ensuring a clutter-free environment. The principal suite is a true retreat, complete with a lavish en-suite bathroom and a walk-in wardrobe.



Salisbury Road, London, NW6



Total area (approx.): 102.9 sq. m (1,107.6 sq. ft)
Terrace area (approx.): 38.9 sq. m (418.7 sq. ft)