



## Sellons Avenue, NW10

£692 Per week

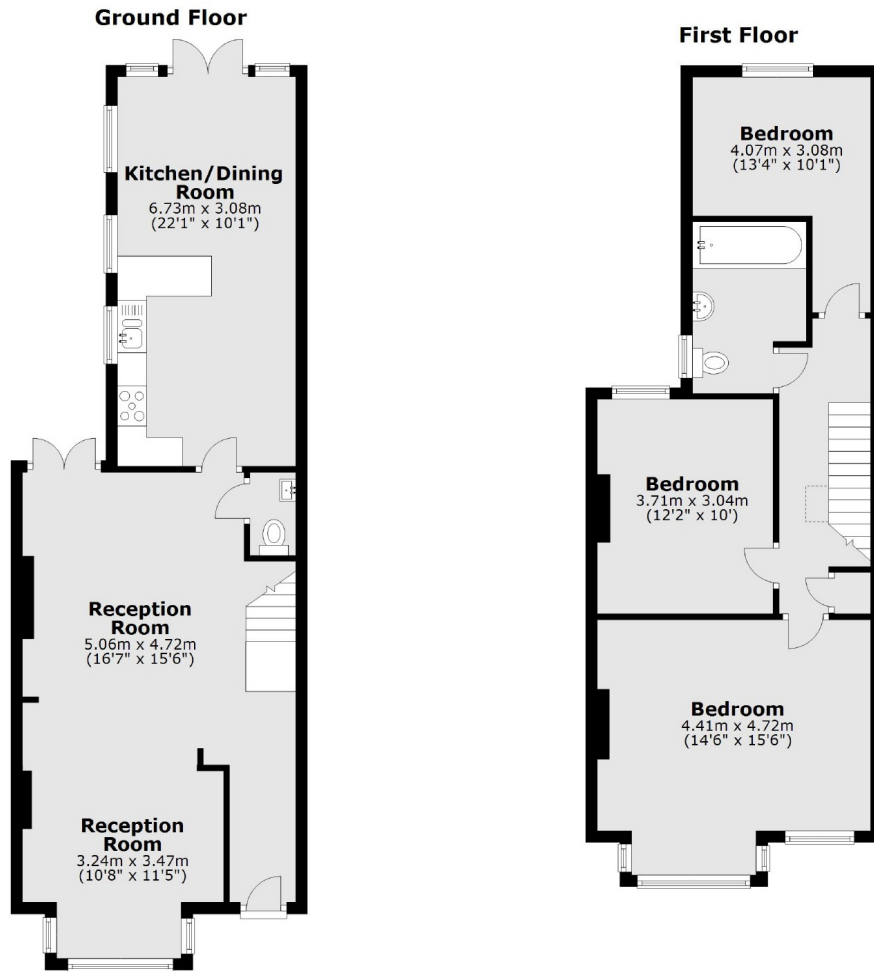
A spacious three bedroom property with wooden floors, a large eat in kitchen and a good size garden. The property has a double reception and a downstairs WC, upstairs there are three good size bedrooms and the family bathroom.

The property is close to Roundwood Park and the nearest stations are Harlesden and Dollis Hill.

### Features

- House
- Three bedrooms
- Wooden Floors
- Large Garden
- Close to Transport
- Spacious

# Sellons Avenue, London, NW10



Total area: approx. 112.1 sq. metres (1206.1 sq. feet)