



## All Souls Avenue, NW10

£438 Per week

A spacious two bedroom property on the first floor. The property has a large front facing reception with feature fireplace. There are two good size double bedrooms and an eat-in kitchen with room to dine.

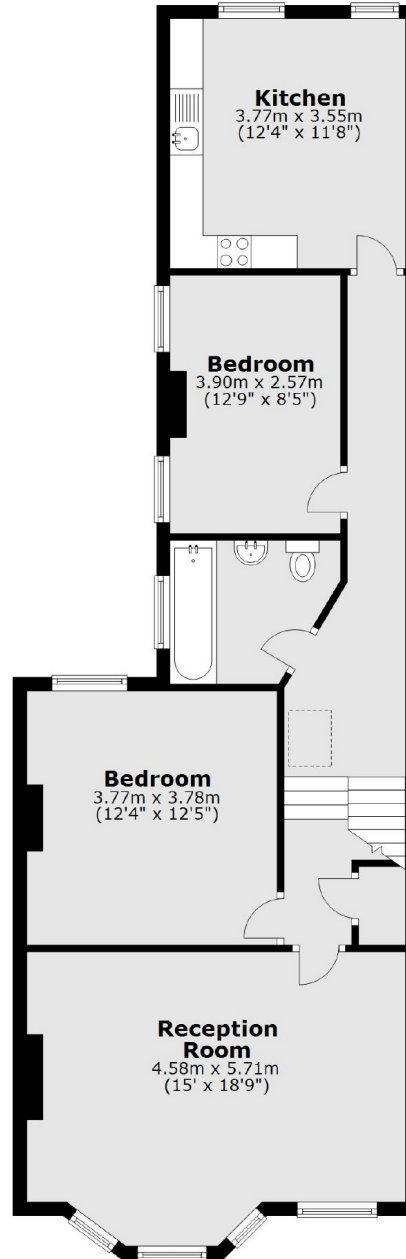
Close to the amenities along Chamberlayne Road, the property is within walking distance of local parks and the nearest station is Kensal Green.

### Features

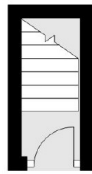
- Two Bedrooms
- First Floor
- Spacious
- Period Features
- Eat-in Kitchen
- Wooden Floors

All Souls Avenue,  
London, NW10

**First Floor**



**Ground Floor**



Total area: approx. 83.3 sq. metres (896.8 sq. feet)