



Hawthorn Walk, W10

£350,000

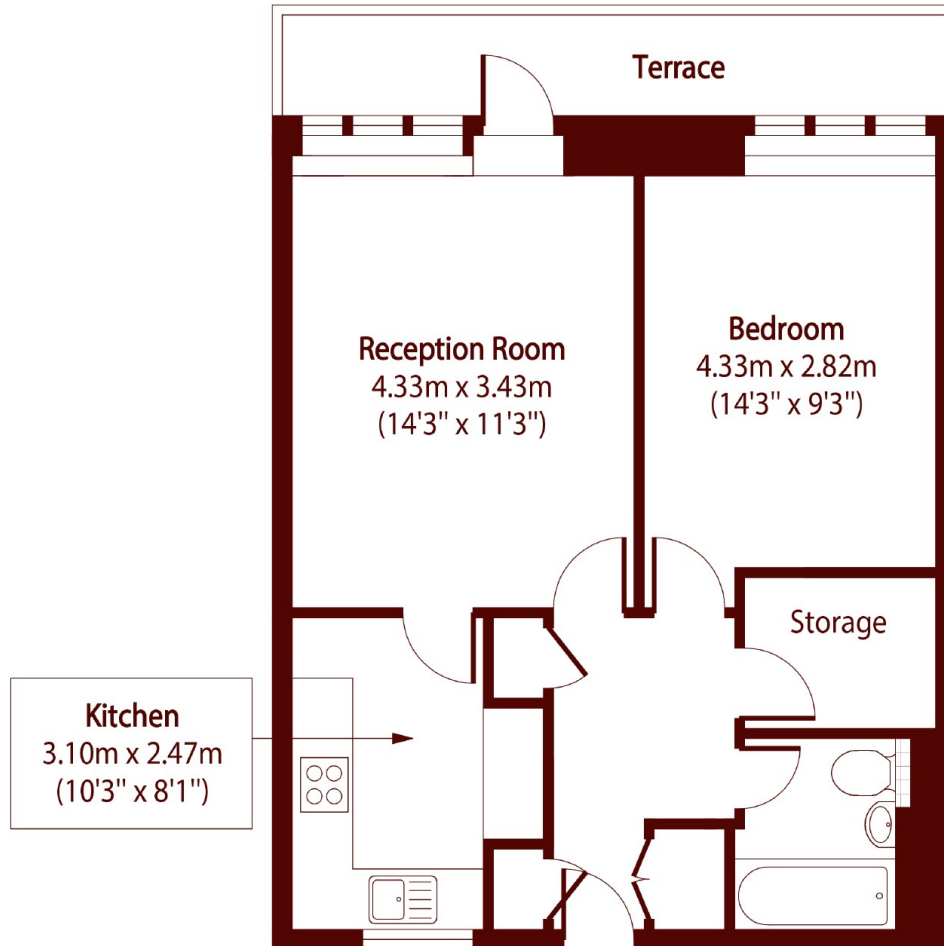
Located on the first floor flat of a gated purpose built is this one bedroom flat with views of the canal from the private balcony, a spacious reception room and a separate kitchen. The flat has ample storage cupboards throughout.

Hawthorn Walk is located within easy reach to all amenities of Ladbrooke Grove, Portobello, Kensal Rise, and Queen's Park. Numerous transport links with tube lines and overground are available nearby.

Features

- One Bedroom
- Balcony
- Recently Renovated
- First Floor Flat
- Close to Transport
- Chain Free

Hawthorn Walk,
London, W10



Total area (approx): 47.20 sq m (730 sq. ft)

Terrace total area (approx): 4.65 sq m (50 sq. ft)