



Sidmouth Road, NW2

£475,000

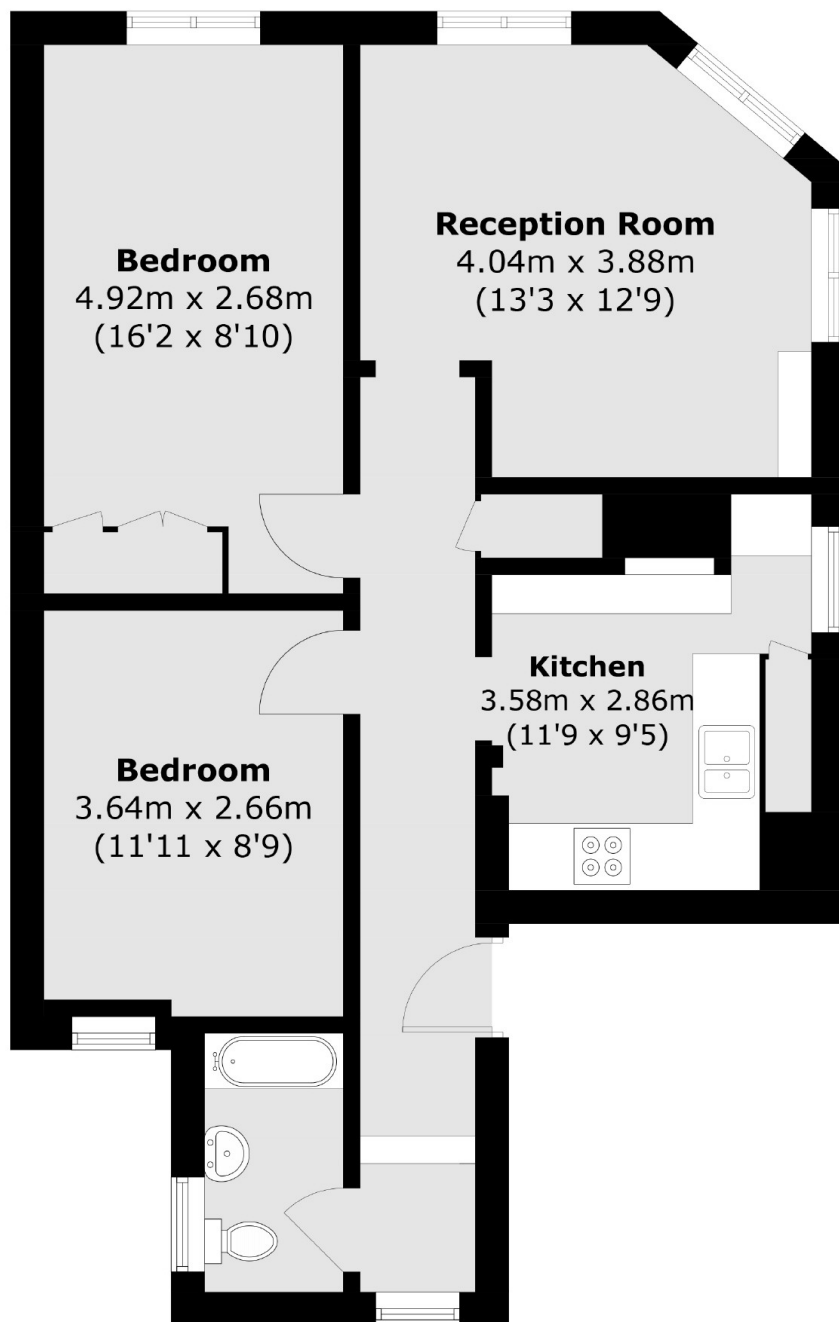
A light and spacious two double bedroom first floor flat nestled between Queen's Park and Willesden Green. The property benefits from having a separate kitchen, a large reception room to the front, a recently extended lease, and is available chain-free.

Sidmouth Road is a residential street close to the shops, cafes, restaurants and bars in both Queen's Park and Willesden Green. Transport links include Willesden Green (Jubilee), Brondesbury Park (Overground), and Queen's Park (Bakerloo & Overground).

Features

- Two Double Bedrooms
- First Floor Flat
- Large Reception Room
- Separate Kitchen
- Chain-Free
- Close To Local Amenities

Sidmouth Road, London, NW2



Total area (approx.): 61.6 sq. m (663.0 sq. ft)