



Staverton Road, NW2

£499,950

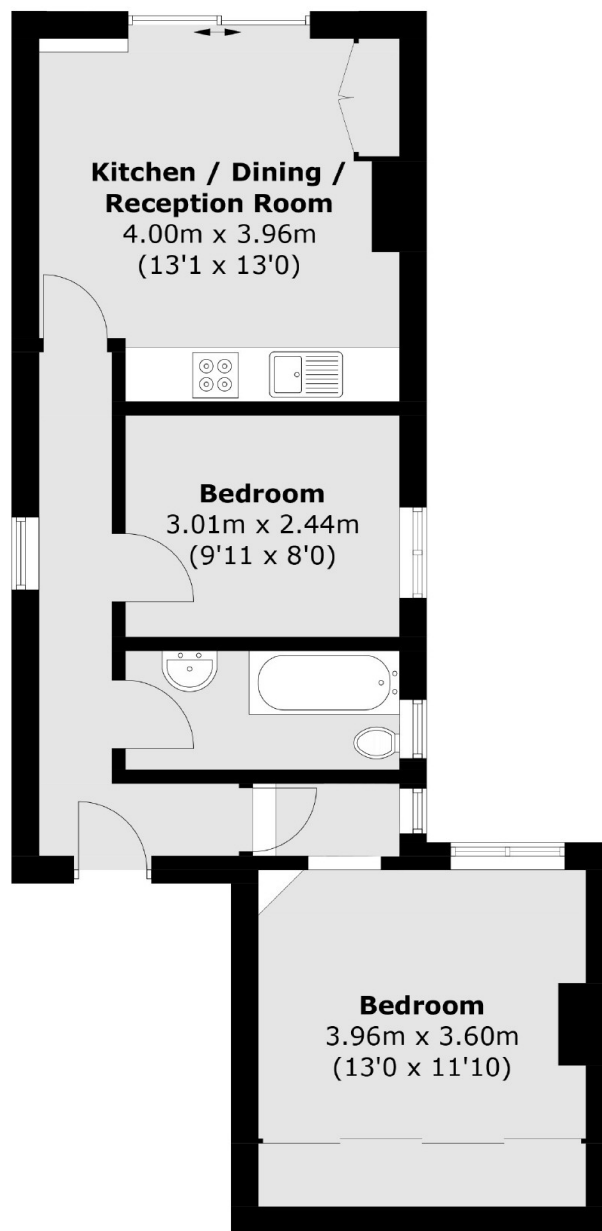
Set in a semi-detached period conversion is this two double bedroom property located on the first floor. With an open plan fully integrated kitchen and reception room to the rear overlooking the mature gardens, built-in storage, good condition throughout, and is available chain-free.

Staverton Road is a quiet, residential road located near to the shops, cafes and amenities of nearby Willesden High Road. Kensal Rise and Queen's Park are in close proximity, with transport links including Willesden Green (Jubilee) and Brondesbury Park (Overground).

Features

- Two Double Bedrooms
- First Floor Flat
- Open Plan Kitchen & Reception
- Share Of Freehold
- Chain-Free
- Close To Transport Links

Staverton Road, London, NW2



Total area (approx.): 49.6 sq. m (533.9 sq. ft)