

Harp Island Close, NW10

£311 Per week

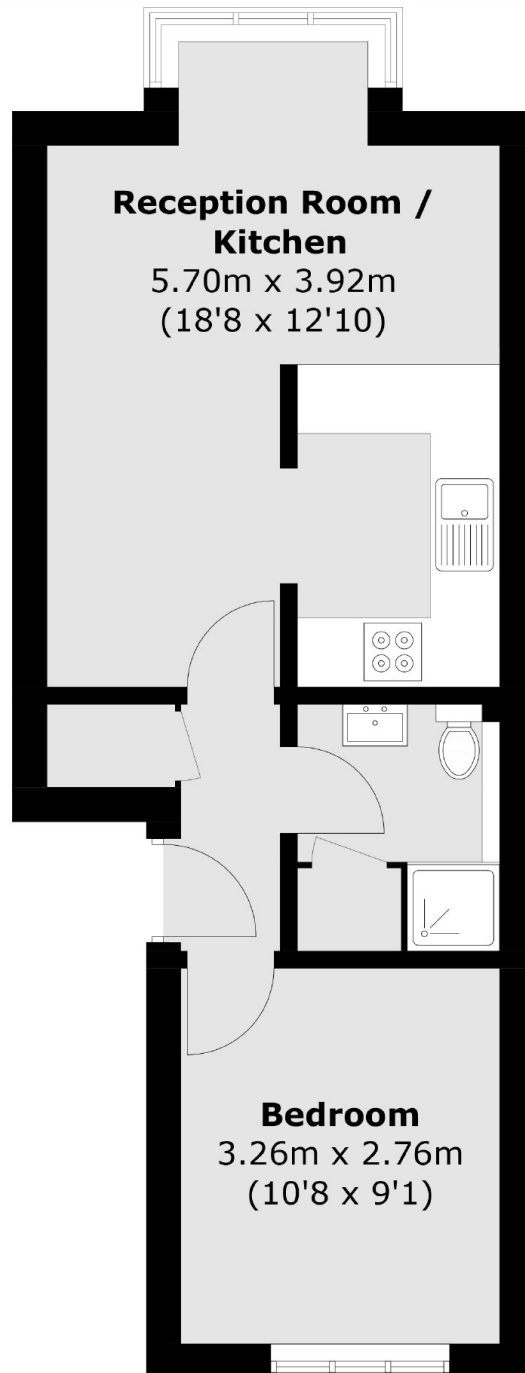
A modern one bedroom apartment set on the top floor in a quiet residential development. The property is newly re-decorated, has wooden floors throughout and an open plan kitchen.

Harp Island close is a residential development close to Neasdon Recreation Ground, local shops and restaurants as well as an ASDA Superstore.

Features

- One Bedroom
- Top Floor
- Available Now
- Wooden Floors
- Open Plan
- Newly Re-decorated

Harp Island Close,
London, NW10



Total area (approx.): 36.8 sq. m (396.1 sq. ft)