



## Artisan Mews, NW10

### £1,100,000

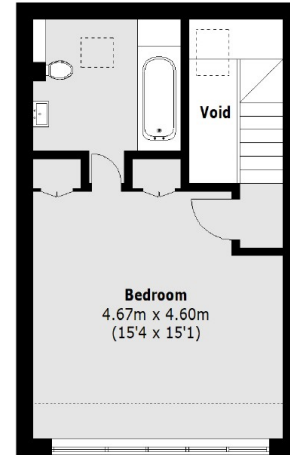
A light and spacious three double bedroom contemporary mews house in a secure gated development. The property benefits from having a double reception room with dual aspect flooding the space with natural light, off-street parking to the front, patio garden to the rear, and is available chain-free.

Artisan Mews is ideally located on a quiet street, offering access to the shops, cafes, restaurants and bars on Chamberlayne Road, and nearby Queen's Park. Transport links include Kensal Green (Bakerloo & Overground) and Kensal Rise (Overground).

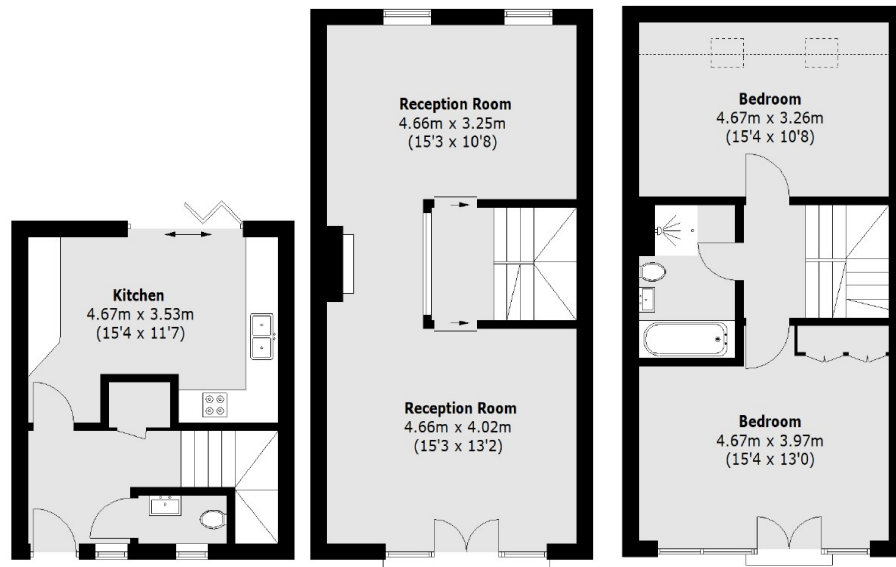
### Features

- Mews House
- Three Double Bedrooms
- Two Bathrooms
- Off-Street Parking
- Secure Gated Development
- Close To Local Amenities

# Artisan Mews, London, NW10



**Third Floor**



**Ground Floor**

**First Floor**

**Second Floor**

Total area (approx.)(Excluding Void): 149.9 sq. m (1,613.4 sq. ft)